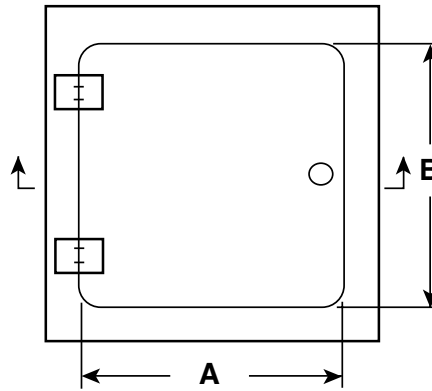


SUBMITTAL SHEET

WALLS & CEILINGS

FRONT ELEVATION



SPECIFICATIONS:

Door: 10 ga. steel

Trim: 10 ga. steel with 2" x 2" x 3 1/16" angle

Finish: Primed grey baked enamel, **paintable surface**

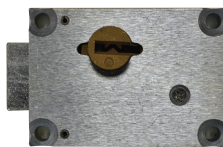
Hinges: Heavy duty type butt hinges welded to surround and door. Allows opening to 180°

Lock: Prepped for detention lock.

OPTIONS (at additional cost)

- Stainless Steel Type 304 No. 4 Satin Finish Brushed
- Stainless Steel Type 316 No. 4 Satin Finish Brushed
- WB-15 Detention lock and WB-16 Paracentric key
- Special sizes available
- _____

Prepped for heavy duty detention lock and paracentric key



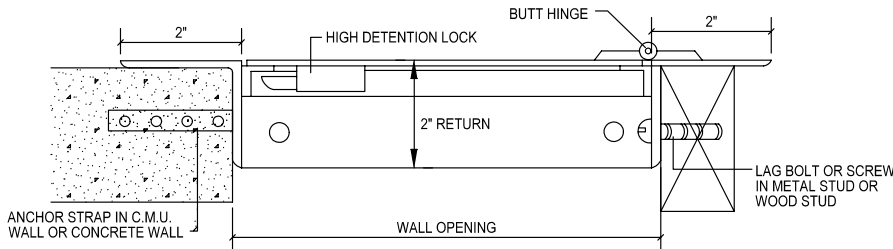
WB-15



WB-16

✓	Item No.	Door Size W x H	Wall Opening	Ship Wt. Lbs.
	HG SEC 1100	12 x 12	12 3/4 x 12 3/4	46
	HG SEC 1100	16 x 16	16 3/4 x 16 3/4	56
	HG SEC 1100	18 x 18	18 3/4 x 18 3/4	62
	HG SEC 1100	24 x 24	24 3/4 x 24 3/4	82
	HG SEC 1100	24 x 36	24 3/4 x 36 3/4	87
	HG SEC 1100	36 x 36	36 3/4 x 36 3/4	90
	WB-15	Detention Lock		
	WB-16	Paracentric Key		

SECTION DETAIL



The WB High Security Access Door is designed to be placed where maximum security is of great importance. This door comes prepped for a detention lock which is sold separately.

Project: _____ Date: _____
 Contractor: _____ Architect: _____
 Sizes: _____ Quantity: _____ App Initials: _____

Corp Off: 1330 Progress Drive • Front Royal, VA 22630 • Phone: 1-800-255-5515 • Fax: 1-800-822-5001 www.wbdoors.com

RELATED PRODUCTS

MD SEC 1000 Series Medium Security Access Door



Family Owned & Operated
Since 1990
Selling only through distribution

See us on



Like us on



facebook.com/wbdoors