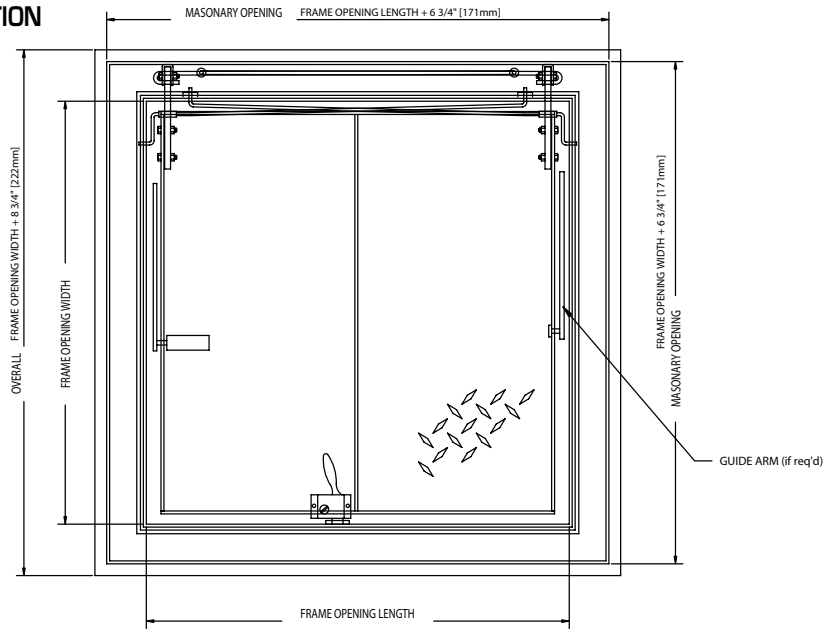


DETAIL & SUBMITTAL SHEET



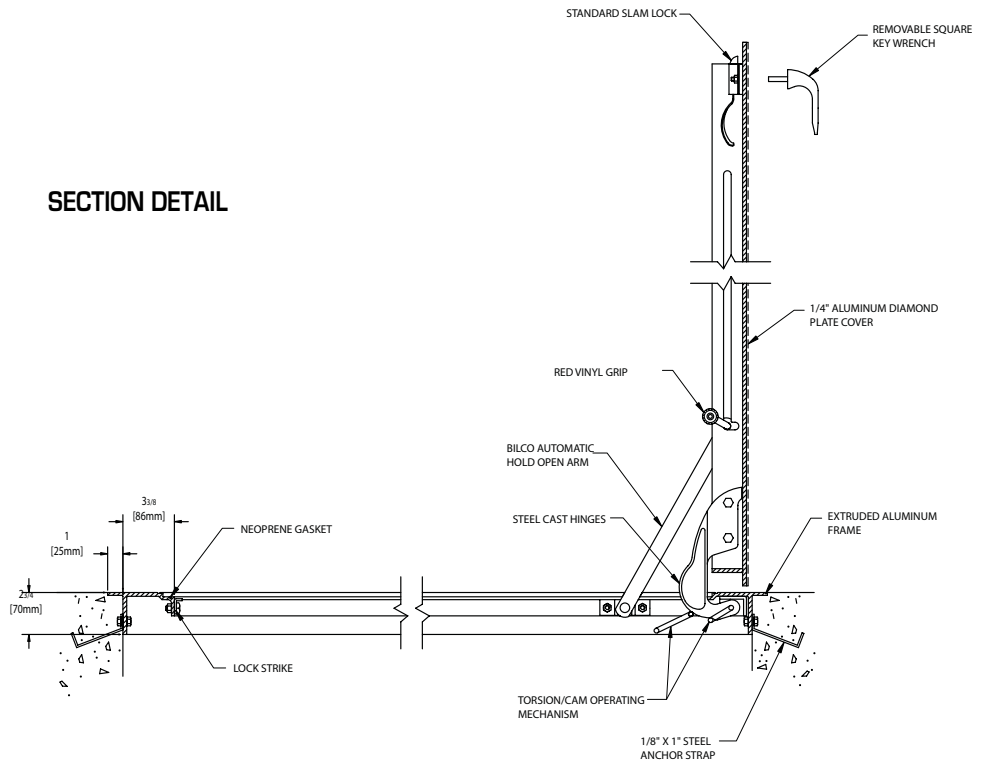
FRONT ELEVATION



SPECIFICATIONS:

- Material:** Cover and frame are 1/4" aluminum
- Cover:** Diamond-pattern tread plate reinforced for 150 psf (732 kg/m²) live load
- Frame:** Extruded aluminum angle frame with strap anchors bolted around the perimeter
- Hinges:** Cast steel cam-action hinges that are concealed from the exterior of the door Latch Type 316 stainless steel slam lock with fixed interior handle and removable exterior turn/lift handle
- Lift Assistance:** Torsion bars that pivot on cam-action hinges. Automatic hold-open arm with grip handle release
- Finish:** Mill finish aluminum with a bituminous coating applied to the exterior of the frame
- Hardware:** Zinc plated/chromate sealed

SECTION DETAIL



OPTIONS: (AT EXTRA COST)

- WB Safety Grab
- WB Safety Post
- Railing Ready
- Special sizes available upon request

✓	Item No.	Door Size W x H	Material	Ship Wt. Lbs.
	K 1	24 x 24	Aluminum	50
	K 2	30 x 30	Aluminum	65
	K 3	36 x 30	Aluminum	77
	K 4	36 x 36	Aluminum	86
	K 5	42 x 42	Aluminum	109

KD available upon request (double leaf)

Project: _____ Date: _____

Contractor: _____ Architect: _____

Sizes: _____ Quantity: _____ Approval Initials: _____



Phone: 1-800-255-5515 • Fax: 1-800-822-5001

www.wbdoors.com