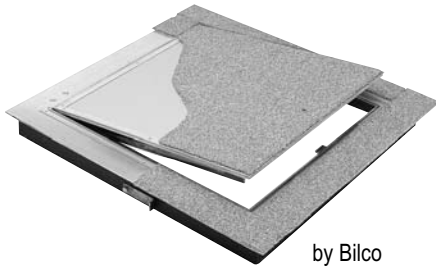


## DETAIL & SUBMITTAL SHEET



by Bilco

### SPECIFICATIONS:

**Material:** Cover and frame are 1/4" steel

**Cover:** Diamond-pattern tread plate reinforced for 150 psf (732 kg/m<sup>2</sup>) live load

**Frame:** Steel angle frame with strap anchors welded around the perimeter

**Hinges:** Cast steel cam-action hinges that are concealed from the exterior of the door

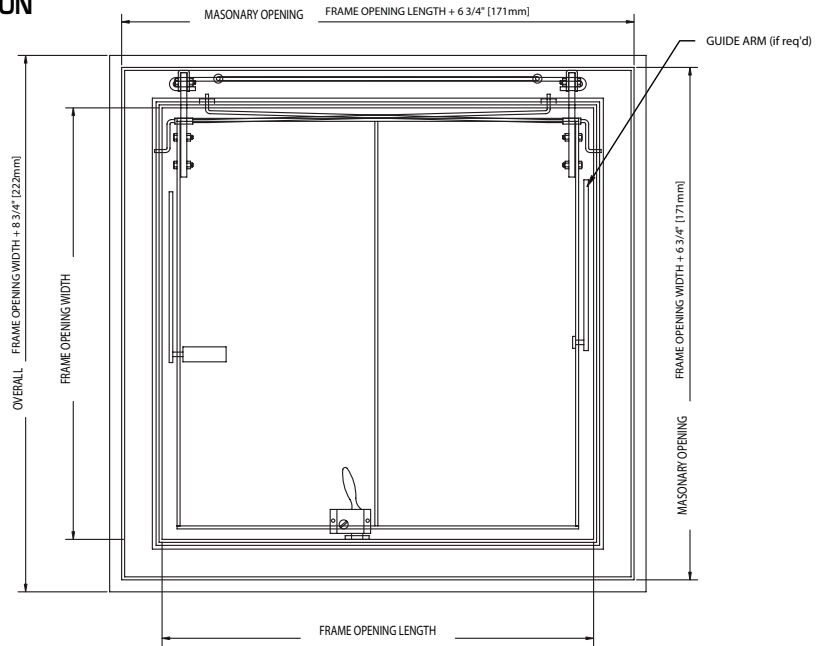
**Latch:** Type 316 stainless steel slam lock with fixed interior handle and removable exterior turn/lift handle

**Lift Assistance:** Torsion bars that pivot on cam-action hinges. Automatic hold-open arm with grip handle release

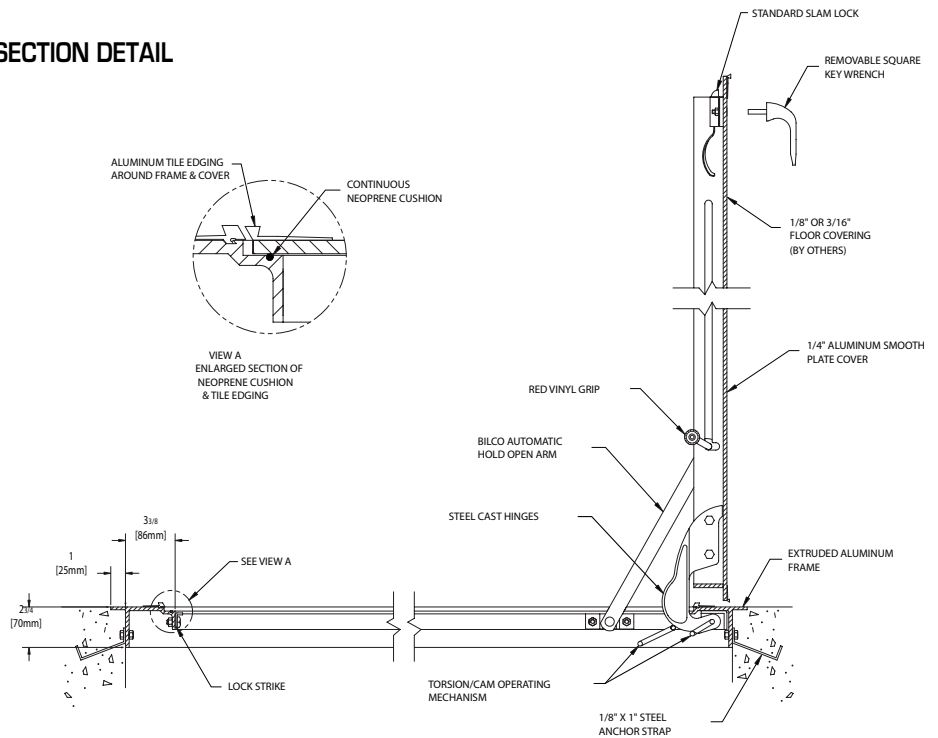
**Finish:** Mill finish aluminum with a bituminous coating applied to the exterior of the frame

**Hardware:** Zinc plated/chromate sealed

### FRONT ELEVATION



### SECTION DETAIL



### OPTIONS: (AT EXTRA COST)

- WB Safety Grab
- WB Safety Post
- Railing Ready
- Special sizes available upon request

✓	Item No.	Door Size W x H	Material	Ship Wt. Lbs.
	T 1	24 x 24	Aluminum	53
	T 2	30 x 30	Aluminum	68
	T 3	36 x 30	Aluminum	81
	T 4	36 x 36	Aluminum	91

TD available upon request (double leaf)

Project: \_\_\_\_\_ Date: \_\_\_\_\_

Contractor: \_\_\_\_\_ Architect: \_\_\_\_\_

Sizes: \_\_\_\_\_ Quantity: \_\_\_\_\_ Approval Initials: \_\_\_\_\_



Phone: 1-800-255-5515 • Fax: 1-800-822-5001

[www.wbdoors.com](http://www.wbdoors.com)