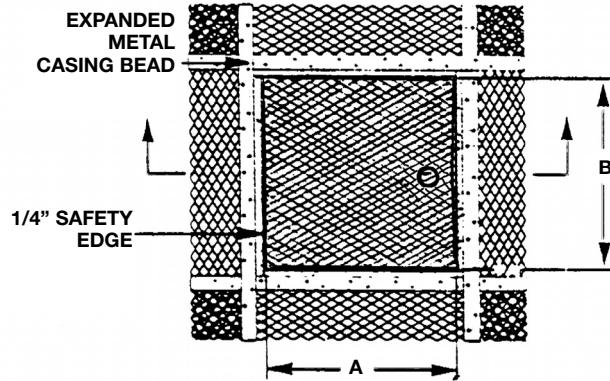


## DETAIL & SUBMITTAL SHEET

WALLS & CEILINGS



FRONT ELEVATION



**SPECIFICATIONS:**

**Door:** 14 ga. steel. Door is recessed 1" and lined with expanded metal lath

**Frame:** 16 ga. steel with 24 ga. galvanized casing bead and expanded metal lath surrounding door

**Hinge:** Continuous stainless steel hinge opens 180°

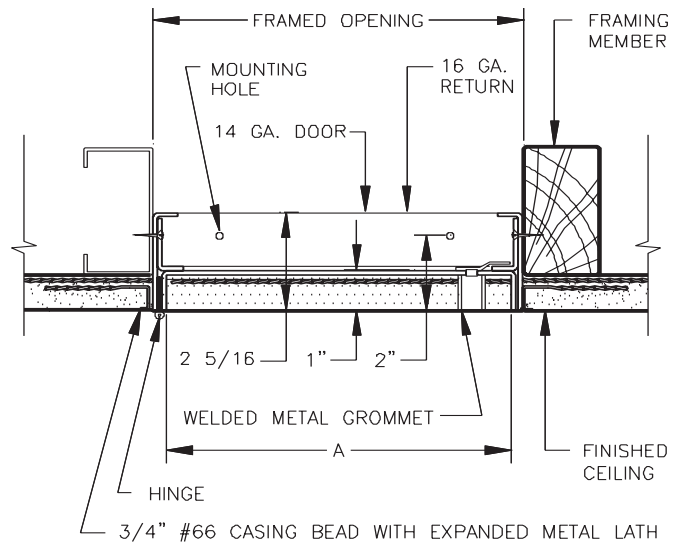
**Latches:** Flush, stainless steel cam latch

**Finish:** White baked enamel coat

**OPTIONS:**

- Key-operated medium barrel cylinder lock
- Weather resistive neoprene gasketing all 4 sides\*
- Special sizes available

SECTION DETAIL



✓	Item No.	Door Size W x H	Wall Opening	Cam Latch	Ship Wt. Lbs.
	AP 510	12 x 12	12 1/4 x 12 1/4	3	10
	AP 510	12 x 24	12 1/4 x 24 1/4	3	13
	AP 510	18 x 18	18 1/4 x 18 1/4	3	15
	AP 510	24 x 24	24 1/4 x 24 1/4	3	28
	AP 510	24 x 36	24 1/4 x 36 1/4	4	37

A precision door that provides a virtually concealed installation, keeping acoustical surfaces intact while contributing to sound control and better appearance. Door panels are recessed to receive plaster up to 1" thick. Plaster covering the door finishes flush with the surrounding field, leaving only the narrow frame edges exposed.

\* Closed cell sponge, blend of Neoprene/EPDM/SBR. Meets ASTM D-1056: SCE 41, RE 41, 2A1; substrate UL 94HF-1 recognized.

Project: \_\_\_\_\_ Date: \_\_\_\_\_

Contractor: \_\_\_\_\_ Architect: \_\_\_\_\_

Sizes: \_\_\_\_\_ Quantity: \_\_\_\_\_ Approval Initials: \_\_\_\_\_



Corporate Office: 1330 Progress Drive • Front Royal, VA 22630  
Phone: 1-800-255-5515 • Fax: 1-800-822-5001

[www.wbdoors.com](http://www.wbdoors.com)