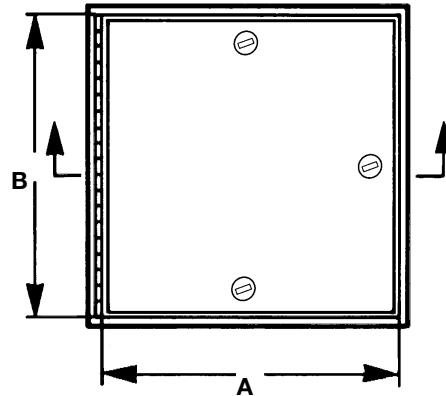


DETAIL & SUBMITTAL SHEET



FRONT ELEVATION



SPECIFICATIONS:

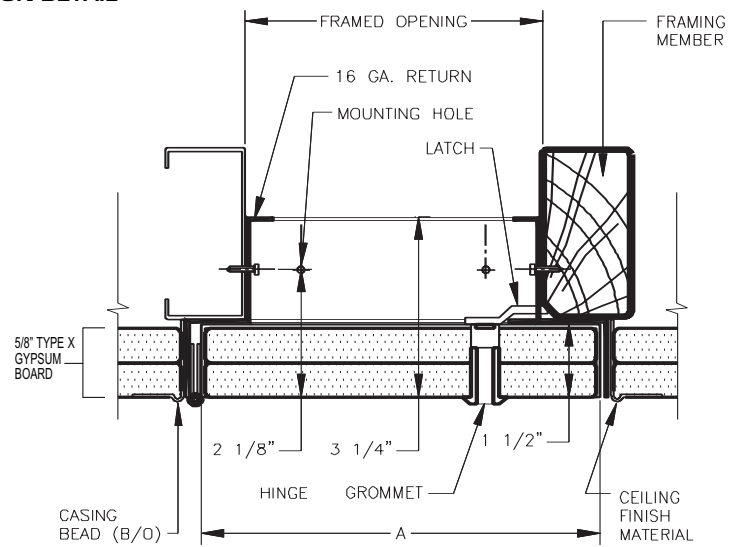
- Door:** 16 ga. steel recessed 1-1/2"
- Frame:** 16 ga. steel, hat channel type shape
- Hinge:** Continuous piano hinge allowing 180°
- Latch:** Flush stainless steel cam latch
- Finish:** White baked enamel coat

Options:

- Key operated long barrel cylinder lock
- Hot Smoke Seal gasketing on all 4 sides**
- Special sizes available

✓	Item No.	Door Size W x H	Wall Opening	Cam Latch	Ship Wt. Lbs.
	ATR 610	12 x 12	12 3/4 x 12 3/4	1	8
	ATR 610	18 x 18	18 3/4 x 18 3/4	1	13
	ATR 610	24 x 24	24 3/4 x 24 3/4	3	23

SECTION DETAIL



To provide access in a suspended drywall ceiling application that forms part of a fire resistive floor-ceiling assembly. The offset design of the return frame along with a recessed panel to receive double layers of 5/8" type X Gypsum board keeps the continuity of the fire resistive quality.

** Hot Smoke Seal™ fire tested: Listed to meet the requirements of standards UL10B, UL10C, UBC 7-2, Part 1 and BS476: 1987 for application to fire rated door assemblies.

Project: _____ Date: _____

Contractor: _____ Architect: _____

Sizes: _____ Quantity: _____ Approval Initials: _____



Corporate Office: 1330 Progress Drive • Front Royal, VA 22630
 Phone: 1-800-255-5515 • Fax: 1-800-822-5001

www.wbdoors.com