

**SUBMITTAL SHEET**

**WALLS & CEILINGS**

**FRONT ELEVATION**

**SPECIFICATIONS:**

**Door:** 14 ga. steel

**Trim:** 16 ga. steel, 3" wide expanded 24 ga. galvanized plaster flange. The space from the expanded flange to the 1/4" safety edge of the door will accommodate 3/4" of plaster

**Finish:** Primed white baked enamel, **paintable surface**

**Latches:** Flush, stainless steel cam latch

**Hinge:** Concealed offset hinge on sizes up to and including 24 x 24. Semi-concealed hinge on sizes over 24 x 24

**OPTIONS (at additional cost)**

**Finishes:**

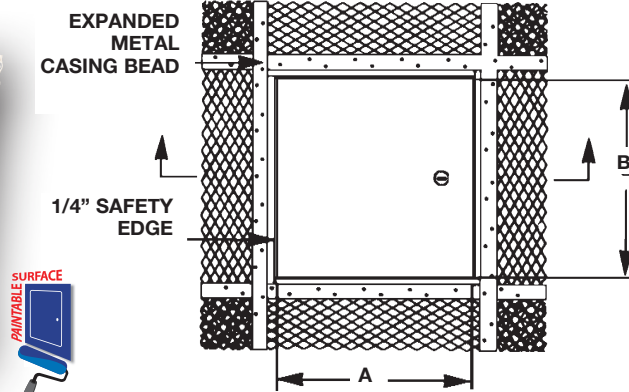
- Stainless Steel Type 304 No. 4 Satin Finish Brushed
- Stainless Steel Type 316 No. 4 Satin Finish Brushed

**Options:** (additional cost)

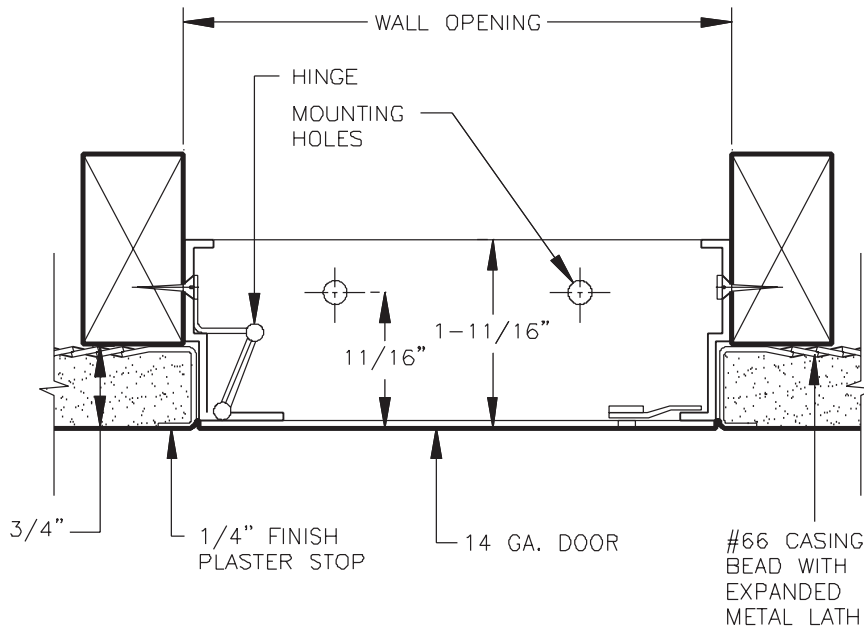
- WB Cylinder lock, 2 keys per door, keyed alike
- Weather resistive neoprene gasket all 3 sides [Closed cell sponge, blend of Neoprene/EPDM/SBR. Meets ASTM D-1056: SCE 41, RE 41, 2A1; substrate UL 94HF-1 recognized]
- Special sizes available



Fully concealed offset hinges up to 24 x 24



**SECTION DETAIL**



Designed for all plaster walls and ceilings. The 1/4" safety edge gives the door a strong frame and prevents the plaster from being chipped under normal use.

Model No.	Door Size W x H	Wall Opening	Cam Latch	Ship Wt. Lbs.
PL 500	8 x 8	8 1/4 x 8 1/4	1	4
PL 500	10 x 10	10 1/4 x 10 1/4	1	5
PL 500	12 x 12	12 1/4 x 12 1/4	3	7
PL 500	12 x 24	12 1/4 x 24 1/4	2	12
PL 500	14 x 14	14 1/4 x 14 1/4	3	9
PL 500	16 x 16	16 1/4 x 16 1/4	3	11
PL 500	18 x 18	18 1/4 x 18 1/4	3	12
PL 500	20 x 20	20 1/4 x 20 1/4	3	15
PL 500	22 x 22	22 1/4 x 22 1/4	4	18
PL 500	22 x 30	22 1/4 x 30 1/4	4	24
PL 500	22 x 36	22 1/4 x 36 1/4	5	27
PL 500	24 x 24	24 1/4 x 24 1/4	4	20
PL 500	24 x 36	24 1/4 x 36 1/4	5	27
PL 500	24 x 48*	24 1/4 x 48 1/4	6	37
PL 500	30 x 30**	30 1/4 x 30 1/4	5	29
PL 500	30 x 36**	30 1/4 x 36 1/4	5	31
PL 500	36 x 36**	36 1/4 x 36 1/4	7	42

\* Available upon request

\*\* Walls only

**RELATED PRODUCTS**

**WB AP 510 Series Recessed for Plaster**



**BuyOnline**  
 WBCA 2019

Project: \_\_\_\_\_ Date: \_\_\_\_\_  
 Contractor: \_\_\_\_\_ Architect: \_\_\_\_\_  
 Sizes: \_\_\_\_\_ Quantity: \_\_\_\_\_ App Initials: \_\_\_\_\_

1330 Progress Drive • Front Royal, VA 22630 • Phone: 1-800-255-5515 • [www.wbdoors.com](http://www.wbdoors.com)



**Family Owned & Operated**  
 Since 1990

