

SUBMITTAL SHEET

WALLS & CEILINGS

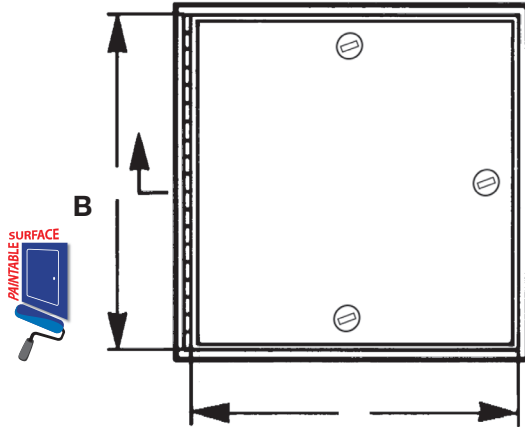
FRONT ELEVATION

SPECIFICATIONS:

- Door:** 16 ga. steel recessed 1-1/2"
- Frame:** 16 ga. steel, hat channel type shape
- Hinge:** Continuous piano hinge allowing 180°
- Latch:** Flush stainless steel cam latch
- Finish:** White baked enamel coat, **paintable surface**

OPTIONS (at additional cost)

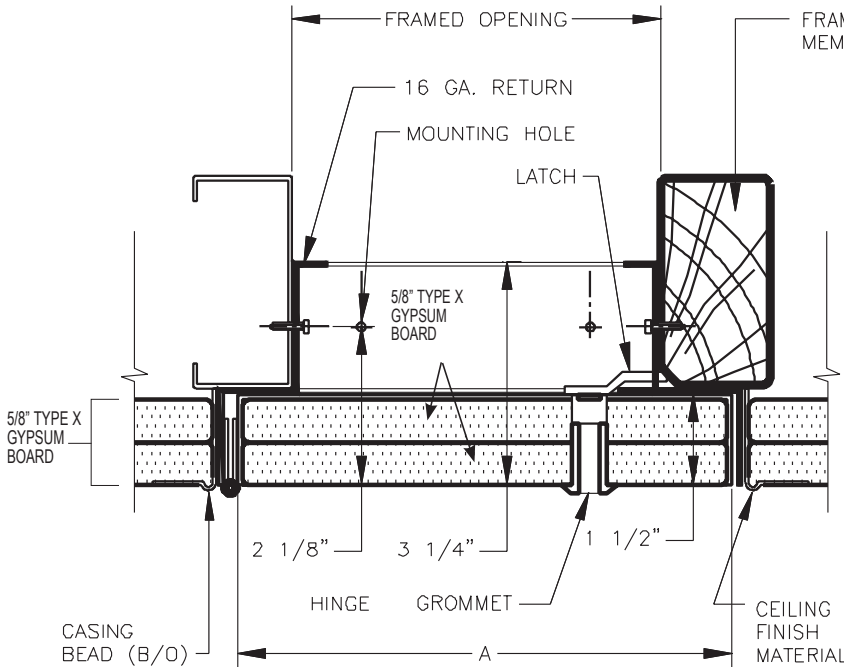
- Key operated long barrel cylinder lock
- Hot Smoke Seal gasket on all 4 sides**
- Special sizes available
-



5/8" Type X Fire-Rated Gypsum board pre-installed

SECTION DETAIL

✓	Item No.	Door Size W x H	Wall Opening	Cam Latch	Ship Wt. Lbs.
	ATR 610-2	12 x 12	10 3/4 x 10 3/4	1	8
	ATR 610-2	18 x 18	16 3/4 x 16 3/4	1	13
	ATR 610-2	24 x 24	22 3/4 x 22 3/4	3	23



To provide access in a suspended drywall ceiling application that forms part of a fire resistive floor-ceiling assembly. The offset design of the return frame along with a recessed panel with 2 layers of 5/8" Type X Fire-Rated Gypsum board keeps the continuity of the fire resistive quality.

** Hot Smoke Seal™ fire tested: Listed to meet the requirements of standards UL10B, UL10C, UBC 7-2, Part 1 and BS476: 1987 for application to fire rated door assemblies. Tested for smoke controlled assemblies: Listed to meet the requirements of standards UL1784, NFPA 105, UBC 7-2, Part 2, and BS476:Part 31, Section 31.1:1983.

Project: _____ Date: _____
 Contractor: _____ Architect: _____
 Sizes: _____ Quantity: _____ App Initials: _____

Corp Off: 1330 Progress Drive • Front Royal, VA 22630 • Phone: 1-800-255-5515 • Fax: 1-800-822-5001 www.wbdoors.com

RELATED PRODUCTS

WB ATR 610 Series Ceiling for Acoustical Tile



Family Owned & Operated
Since 1990
Selling only through distribution

See us on



Like us on



facebook.com/wbdoors