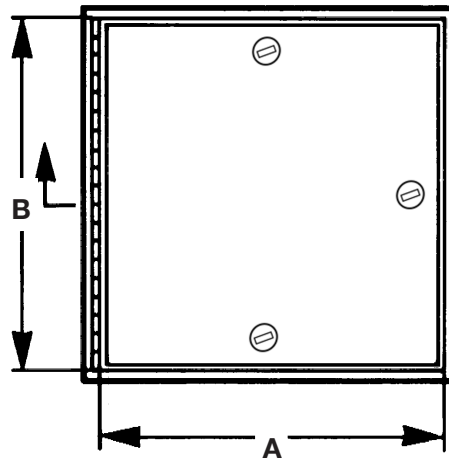


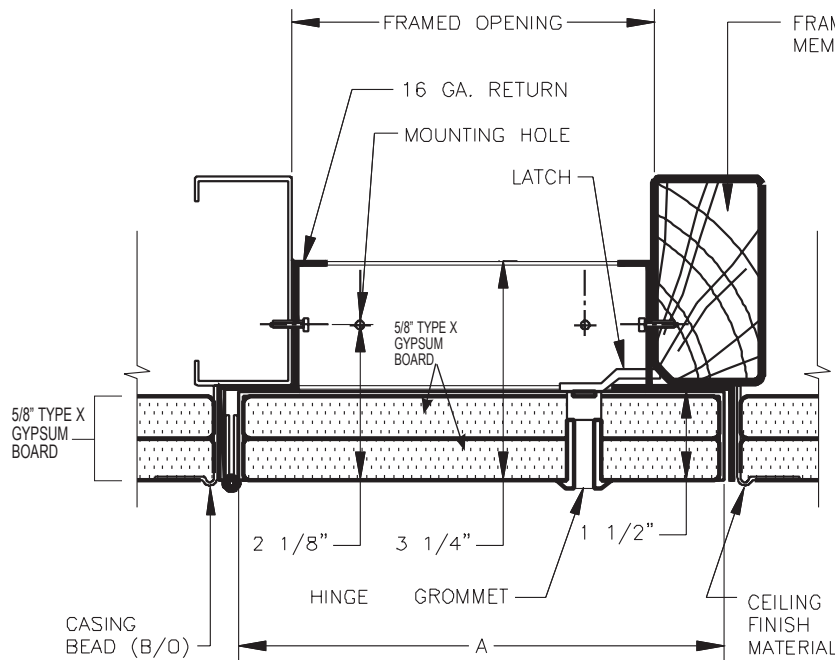
SUBMITTAL SHEET

WALLS & CEILINGS

FRONT ELEVATION



SECTION DETAIL



SPECIFICATIONS:

Door: 16 ga. steel recessed to accept two 5/8" Type X Gypsum board to meet fire resistive codes

Trim: 16 ga. steel

Finish: White baked enamel, paintable surface

Latch: Flush stainless steel cam latch

Hinge: Continuous piano hinge allowing 180°

OPTIONS (at additional cost)

- Key operated long barrel cylinder lock
- Two 5/8" Type X Gypsum Board installed (ATR 610-2, see submittal sheet)
- Hot Smoke Seal* gasket on all 4 sides
- Special sizes available

✓	Model No.	Door Size W x H	Wall Opening	Cam Latch	Ship Wt. Lbs.
	ATR 610	12 x 12	10 3/4 x 10 3/4	1	8
	ATR 610	18 x 18	16 3/4 x 16 3/4	1	13
	ATR 610	24 x 24	22 3/4 x 22 3/4	3	23

To provide access in a suspended drywall ceiling application that forms part of a fire resistive floor-ceiling assembly. The offset design of the return frame along with a recessed panel with 2 layers of 5/8" type X gypsum board keeps the continuity of the fire resistive quality. Door has not been tested.

* Hot Smoke Seal™ fire tested: Listed to meet the requirements of standards UL10B, UL10C, UBC 7-2, Part 1 and BS476: 1987 for application to fire rated door assemblies. Tested for smoke controlled assemblies: Listed to meet the requirements of standards UL1784, NFPA 105, UBC 7-2, Part 2, and BS476:Part 31, Section 31.1:1983.

Project: _____ Date: _____
 Contractor: _____ Architect: _____
 Sizes: _____ Quantity: _____ App Initials: _____

1330 Progress Drive • Front Royal, VA 22630 • Phone: 1-800-255-5515 • www.wbdoors.com

RELATED PRODUCTS

WB ATR 610-2 Series Ceiling for Acoustical Tile



WBCA 2019



Family Owned & Operated
 Since 1990

