

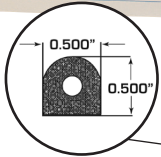
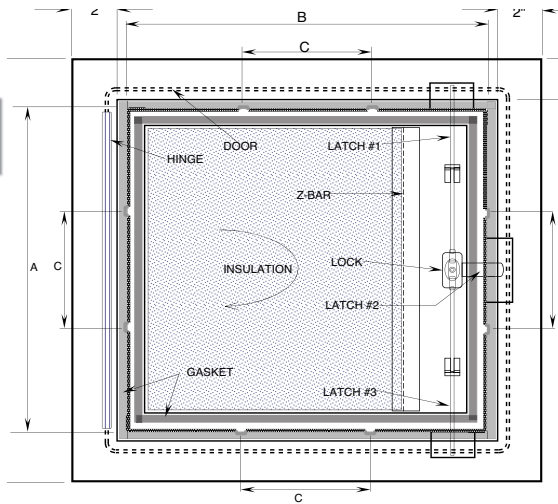
SUBMITTAL SHEET

WALLS ONLY

FRONT ELEVATION

SPECIFICATIONS:

Door: 16 ga. steel
Trim: 16 ga. steel
Finish: Zinc dipped Primed white baked grey enamel, paintable surface
Latches: Chrome plated "T" type handle with pivot rod 1 point catch. [3 point catch on 18 x 18 and above]. Key cylinder lock. **Opens with the outside handle only. No interior release.**
Hinges: Continuous piano hinge
Insulation: Double layer of 1" GreenGuard® Extruded Polystyrene insulation board, with R-Value @ 75°F Mean 5.0 x 2, FM approved*
Gasket: Open celled microcellular polyurethane on inside of door and closed cell neoprene sponge SC42 W/PSA stripping gasket on the back of the door
Application: For exterior purposes, weather resistive



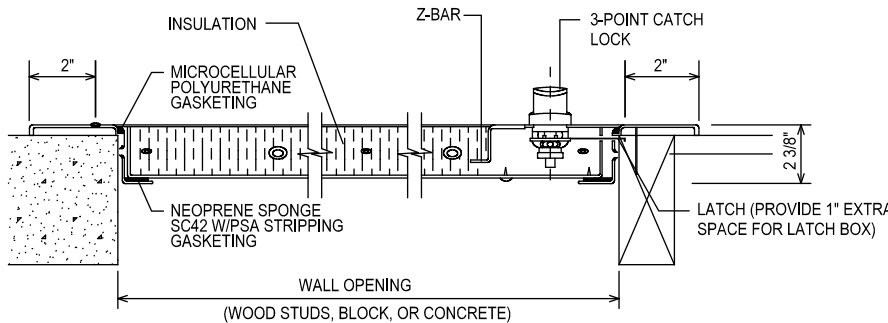
Microcellular polyurethane gasket



Neoprene sponge SC42 W/PSA stripping gasket applied on back inside edge



SECTION DETAIL



✓	Model No.	Door Size W x H	Wall Opening *	Ship Wt. Lbs.
	EXT 1300	12 x 12	12 1/4 x 12 1/4	27
	EXT 1300	14 x 14	14 1/4 x 14 1/4	30
	EXT 1300	16 x 16	16 1/4 x 16 1/4	35
	EXT 1300	18 x 18	18 1/4 x 18 1/4	40
	EXT 1300	22 x 30	22 1/4 x 30 1/4	45
	EXT 1300	22 x 36	22 1/4 x 36 1/4	50
	EXT 1300	24 x 24	24 1/4 x 24 1/4	55
	EXT 1300	24 x 36	24 1/4 x 36 1/4	67
	EXT 1300	30 x 36	30 1/4 x 36 1/4	79
	EXT 1300	36 x 36	36 1/4 x 36 1/4	90

Limited availability.

The one of a kind exterior access door is galvannealed** steel, insulated with 1" GreenGuard and includes two types of gasket. Weather resistive open celled microcellular polyurethane gasket and closed cell neoprene sponge SC42 W/PSA stripping gasket on inside for outdoor applications [certain saltwater areas might not be compatible].

* GreenGuard® Extruded Polystyrene insulation board, with R-Value @ 75°F Mean 5.0 x 2. R means resistance to heat flow. The higher the R-Value the greater the insulating power and energy saving capability. Compliance: BOCA 90-78, SBCCI 2228A, ICBO 4280, CA BHF TB 1334, MN Dept. of Energy Chapter 7640, CCMC 12722-L, Und. Lab. Inc.® See Classification Certificate A183. FM Approved.

** Galvannealed steel: The preferred coated steel for use in architectural applications.
 • Coated in zinc, heated to over 1000° F so iron is pulled from steel.
 • Iron mixes with zinc coating, making it harder, more scratch-resistant, uniform in appearance.
 • Galvannealed steel bonds better with paint, and better for welding.

Project: _____ Date: _____
 Contractor: _____ Architect: _____
 Sizes: _____ Quantity: _____ App Initials: _____

1330 Progress Drive • Front Royal, VA 22630 • Phone: 1-800-255-5515 • www.wbdoors.com

RELATED PRODUCTS

WB Exterior 1350 Ultra Series Access Door



Family Owned & Operated
 Since 1990

