

## DETAIL & SUBMITTAL SHEET

by Bilco



### SPECIFICATIONS:

**Material:**

**Steel:** Cover and frame are 14 ga. G-90 paint bond galvanized steel

**Aluminum:** Cover and frame are 11 ga. aluminum

**Cover:** Breakformed, hollow-metal design with 1" concealed fiberglass insulation, 3" beaded, overlapping flange, fully welded at corners, and internally reinforced for 40 psf (195 kg/m<sup>2</sup>) live load

**Gasket:** Extruded EPDM rubber gasket permanently adhered to the cover

**Hinges:** Heavy-duty pintle hinges with 3/8" Type 316 stainless steel hinge pins

**Latch:** Positive hold/release mechanism controlled by a single UL-listed 165°F (74°C) fusible link. Designed to hold the cover closed against a 90 psf (438 kg/m<sup>2</sup>) uplift force. Provided with interior and exterior pull release cables to manually open vent covers.

**Performance Rating:** Comply with UL 790 Class A (burning brand test)

**Finish:**

**Steel:** Alkyd base red oxide primer

**Aluminum:** Mill finish

**Hardware:**

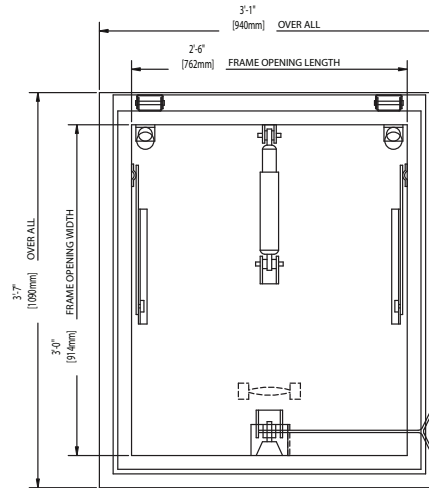
**Steel:** Engineered composite compression spring tubes. Steel compression springs with electrocoated acrylic finish. All other hardware is zinc plated/chromate sealed.

**Aluminum:** Engineered composite compression spring tubes. Steel compression springs with electrocoated acrylic finish. Type 316 stainless steel hinges. All other hardware is zinc plated/chromate sealed.

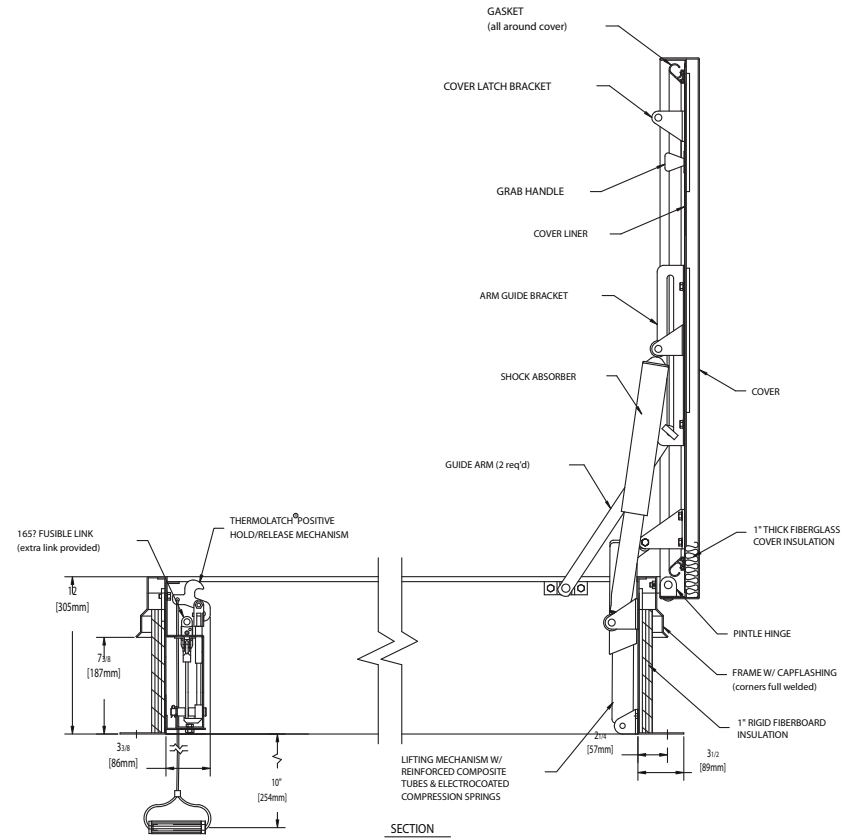
**OPTIONS (at additional cost)**

- WB Safety Grab
- WB Safety Post
- Railing Ready
- Special sizes available upon request

### FRONT ELEVATION



### SECTION DETAIL



✓	Item No.	Door Opening W x H	Material	Ship Wt. Lbs.
	S 20SV	36 x 30	Steel	193
	NB 20SV	30 x 54	Steel	260
	L 20SV	30 x 96	Steel	423
	S 40SV	36 x 30	Stl Curb/Al Cvr	160
	NB 40SV	30 x 54	Stl Curb/Al Cvr	215
	L 40SV	30 x 96	Stl Curb/Al Cvr	315
	S 50SV	36 x 30	Aluminum	112
	NB 50SV	30 x 54	Aluminum	155
	L 50SV	30 x 96	Aluminum	240

Project: \_\_\_\_\_ Date: \_\_\_\_\_

Contractor: \_\_\_\_\_ Architect: \_\_\_\_\_

Sizes: \_\_\_\_\_ Quantity: \_\_\_\_\_ Approval Initials: \_\_\_\_\_



Corporate Office: 1330 Progress Drive • Front Royal, VA 22630  
Phone: 1-800-255-5515 • Fax: 1-800-822-5001

[www.wbdoors.com](http://www.wbdoors.com)