

## DETAIL & SUBMITTAL SHEET

by Bilco



### SPECIFICATIONS:

**Material:** Cover and frame are 1/4" steel

**Cover:** Diamond-pattern tread plate reinforced for 300 psf (1464 kg/m<sup>2</sup>) live load

**Frame:** Formed channel frame with full anchor angle welded around the perimeter. A 1-1/2" drain coupling is welded under the frame for a pipe connection to a dry well or disposal system.

**Hinges:** Heavy forged brass hinges with 3/8" Type 316 stainless steel hinge pins

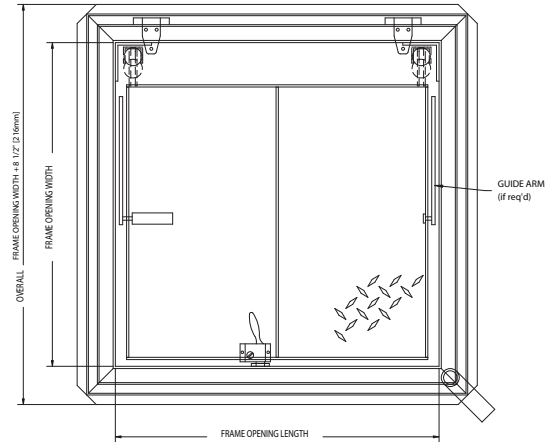
**Latch:** Type 316 stainless steel slam lock with fixed interior handle and removable exterior turn/lift handle. Latch release is protected by a flush, gasketed, removable screw plug

**Lift Assistance:** Compression spring operators enclosed in telescopic tubes. Automatic hold-open arm with grip handle release.

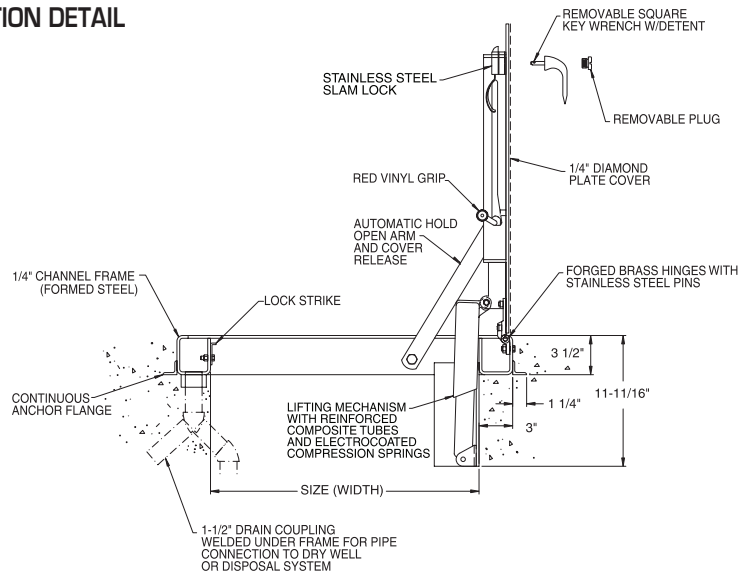
**Finish:** Alkyd base red oxide primer

**Hardware:** Engineered composite compression spring tubes. Steel compression springs with electrocoated acrylic finish. Slam lock and all fasteners are Type 316 stainless steel. All other hardware is zinc plated/chromate sealed.

### FRONT ELEVATION



### SECTION DETAIL



✓	Item No.	Door Opening W x H	Material	Ship Wt. Lbs.
	J 1	24 x 24	Steel	50
	J 2	30 x 30	Steel	65
	J 3	36 x 30	Steel	77
	J 4	36 x 36	Steel	86
	J 5	42 x 42	Steel	109

JD available upon request (double leaf)

Project: \_\_\_\_\_ Date: \_\_\_\_\_

Contractor: \_\_\_\_\_ Architect: \_\_\_\_\_

Sizes: \_\_\_\_\_ Quantity: \_\_\_\_\_ Approval Initials: \_\_\_\_\_



Corporate Office: 1330 Progress Drive • Front Royal, VA 22630  
Phone: 1-800-255-5515 • Fax: 1-800-822-5001

[www.wbdoors.com](http://www.wbdoors.com)