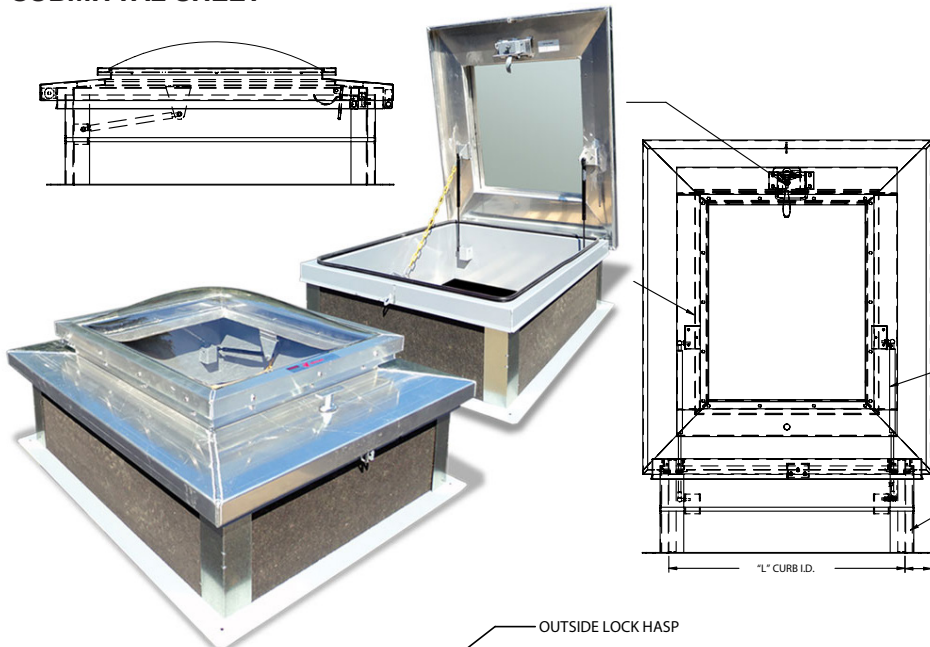


SUBMITTAL SHEET



FRONT ELEVATION

SPECIFICATIONS:

- 14 gauge galvanized steel with 1" thick fiberboard roof insulation at curb exterior.
- Durable re-coatable gray primer finish
- Clear dome allows natural light to pass through
- Dome allows for debris to naturally fall off
- Heavy duty galvanized steel hinges with 3/8" pin
- Heavy duty lock and handle
- Gas spring operators opens/ closes cover with ease
- Inside pull handle allows for easy control when closing cover.
- Weather resistive gasket
- Finest quality of workmanship

General: Roof access hatch shall be model WB-RH 30x36 steel manufactured exclusively for The Williams Bros. Corp of America, with a durable, re-coatable gray primer finish. A yellow and black striped visual warning signal shall be on top of curb and on inside of lid.

Curb Construction: Curb shall be 14 ga. [G 90] galvanized steel with durable re-coatable gray primer finish standard. Curb shall be 12" (304mm) in height with a 4" (101mm) fiber board insulation, and mounting holes for roof attachment. Curb shall have integral cap flashing of the same material and thickness as the curb. Curb and cap flashing shall be fully welded at the corners for a watertight construction. Hinges are two-piece formed steel, with a non-removable heavy-duty pivot pin.

Covers: Cover shall be 14 ga. [G 90] galvanized steel, with radius corners for safety, and shall be fully welded at the corners for watertight construction. An extruded rubber gasket, mechanically fastened to the inside of the lid shall cause the hatch lid to seal.

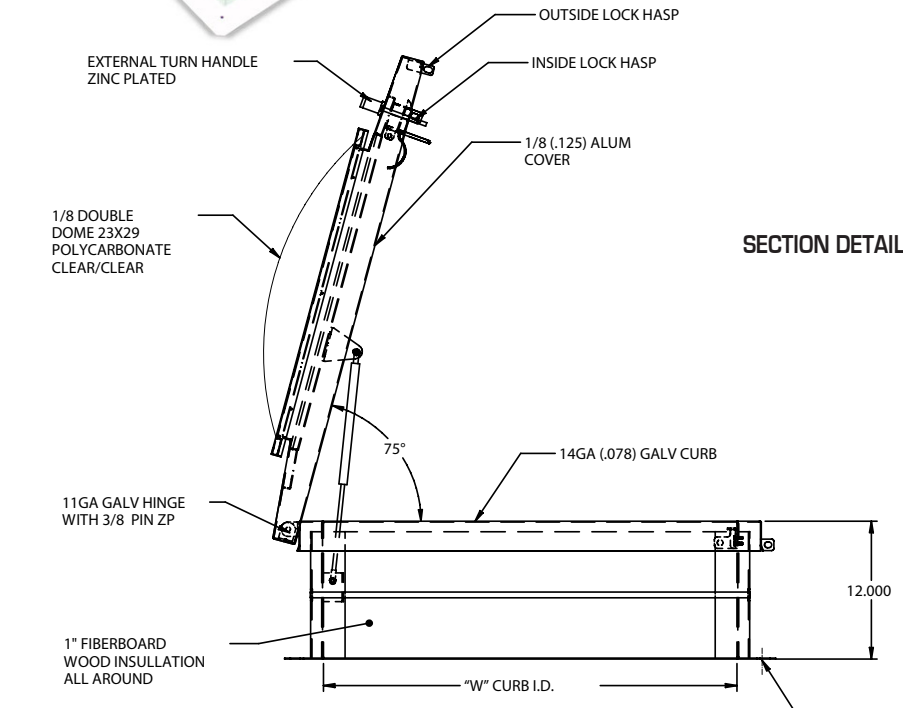
Hardware: Hardware shall include interior handle, with a positive, one-point locking mechanism, exterior handle, and provisions for padlock, both inside and out. Pre-lubricated compression springs, encased in zinc-plated telescopic tubes, for smooth and controlled door operation at any position. An automatic, hold-open arm, with vinyl grip, shall be standard. All hardware shall be corrosion resistant, and all fasteners shall be of a self-locking type.

OPTIONS (at additional cost)

- Special sizes available upon request

✓	Model No.	Door Size W x L	Ship Wt. Lbs.
	WB RH-D	24 x 24	135
	WB RH-D	24 x 36	145
	WB RH-D	30 x 30	145
	WB RH-D	36 x 30	151
	WB RH-D	36 x 36	167
	WB RH-D	48 x 48	275

Available in aluminum.



SECTION DETAIL

This heavy duty WB Roof Hatch offers heavy duty lock and handle assembly, heavy gauge, weather-resistant gasket and fully concealed hinge hardware located on the interior making it rust resistive. With the dome skylight, this roof hatch allows natural sunlight to come into any environment you might need. The dome features allows debris such as leaves, branches to naturally fall of. Durable and re-coatable gray primer finish comes standard. This premium roof hatch/skylight is perfect for hotels, apartments, hospitals or any location where access to roof is necessary.

Project: _____ Date: _____
 Contractor: _____ Architect: _____
 Sizes: _____ Quantity: _____ App Initials: _____

1330 Progress Drive • Front Royal, VA 22630 • Phone: 1-800-255-5515 • www.wbdoors.com



Family Owned & Operated
 Since 1990

