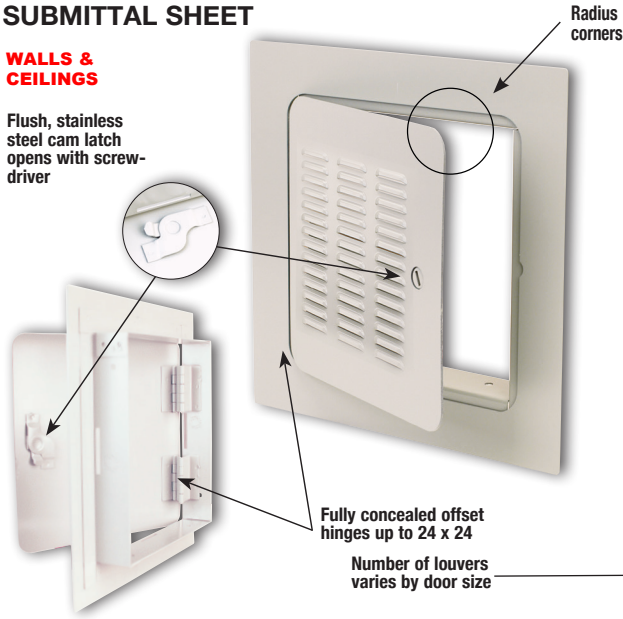


**BEST in Quality! GOOD in Price!**

**SUBMITTAL SHEET**

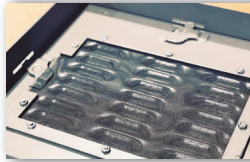
**WALLS & CEILINGS**

Flush, stainless steel cam latch opens with screw-driver

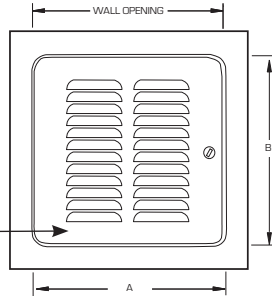


Radius corners

Optional insect screen installed on the inside of louvered doors.



FRONT ELEVATION



Fully concealed offset hinges up to 24 x 24  
 Number of louvers varies by door size

**SPECIFICATIONS:**

- Door: 14 ga. steel with radius corners
- Trim: 16 ga. steel
- Finish: Primed white baked enamel, paintable surface
- Latches: Flush, stainless steel cam latches. Number of Cams varies per door size.
- Hinges: Fully-concealed hinge up to and including 24 x 24. Allows opening to 165°. **Over 24 x 24 is semi-concealed.**

**OPTIONS (at additional cost)**

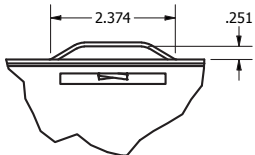
- Stainless Steel Type 304 No. 4 Satin Finish Brushed
- Stainless Steel Type 316 No. 4 Satin Finish Brushed

**Louver Options:**

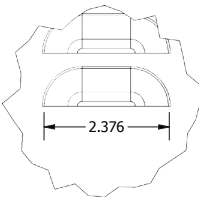
- 1/4 louvers
- 1/2 louvers
- Full Louvers (default)

**Options: (additional cost)**

- WB Key Cylinder Locks - keyed alike 2 keys per door
- Mortise lock and locks by others
- Neoprene gasket all 4 sides
- Insect screen
- Special sizes available

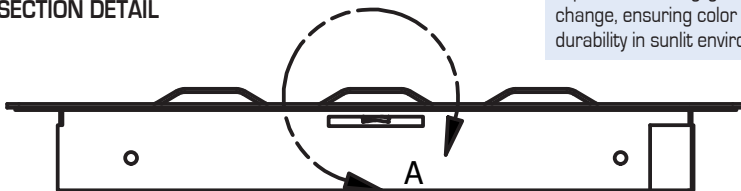


DETAIL A



DETAIL B

**SECTION DETAIL**



**THE WILLIAMS BROTHERS ADVANTAGE**

**Durability:** Taber Abrasion Tested - Withstood 4,550 cycles (ASTM D4060) with a wear index of 91.1 for a durable, long-lasting finish.

**Corrosion Resistance:** Salt Spray Tested - Withstood 48 hours of ASTM B117 exposure with only slight edge rusting, demonstrating excellent resistance to harsh environments.

**UV Resistance:** Tested to ASTM G155 & G154 standards - Withstood 48 hours of continuous UV exposure with negligible visual change, ensuring color stability and finish durability in sunlit environments.



Model No.	Door Size W x H	Wall Opening	Cam Latch	Ship Wt. Lbs.
GP LV 103	12 x 12	12 1/4 x 12 1/4	3	8
GP LV 103	14 x 14	14 1/4 x 14 1/4	3	10
GP LV 103	16 x 16	16 1/4 x 16 1/4	3	13
GP LV 103	18 x 18	18 1/4 x 18 1/4	3	14
GP LV 103	20 x 20	20 1/4 x 20 1/4	3	17
GP LV 103	20 x 30	20 1/4 x 30 1/4	4	23
GP LV 103	22 x 22	22 1/4 x 22 1/4	4	22
GP LV 103	22 x 30	22 1/4 x 30 1/4	4	25
GP LV 103	22 x 36	22 1/4 x 36 1/4	5	32
GP LV 103	24 x 24	24 1/4 x 24 1/4	4	24
GP LV 103	24 x 30	24 1/4 x 30 1/4	4	27
GP LV 103	24 x 36	24 1/4 x 36 1/4	5	35
GP LV 103	24 x 48	24 1/4 x 48 1/4	6	43
GP LV 103	30 x 30	30 1/4 x 30 1/4	6	32
GP LV 103	30 x 36	30 1/4 x 36 1/4	6	39
GP LV 103	32 x 32	32 1/4 x 32 1/4	6	35
GP LV 103	36 x 36	36 1/4 x 36 1/4	7	44
GP LV 103	36 x 48	36 1/4 x 48 1/4	8	57
GP LV 103	48 x 48	48 1/4 x 48 1/4	12	70

The larger the size, more cams are used for closure.  
 For clear opening please request at [info@wbdoors.com](mailto:info@wbdoors.com)

This Premium precision-flush access door for wall and ceiling installation promotes air flow and temperature control with louvered options

- When a door increases in size, more cams are added for security in the ceiling or wall
- For requests on clear opening after door installed, please email [info@wbdoors.com](mailto:info@wbdoors.com)
- All installation holes must be used for proper door functionality and security
- For custom sizes, please reach out to [info@wbdoors.com](mailto:info@wbdoors.com)
- Clear opening may be impeded by structural or functional parts on door
- Drawings of any door can be requested through [info@wbdoors.com](mailto:info@wbdoors.com)

Project: \_\_\_\_\_ Date: \_\_\_\_\_  
 Contractor: \_\_\_\_\_ Architect: \_\_\_\_\_  
 Sizes: \_\_\_\_\_ Quantity: \_\_\_\_\_ App Initials: \_\_\_\_\_

1330 Progress Drive • Front Royal, VA 22630 • Phone: 1-800-255-5515 • [www.wbdoors.com](http://www.wbdoors.com)

**RELATED PRODUCTS**



**BETTER in Quality!  
 BETTER in Price!**

**WB GP 101 Series  
 Draftstop Access Door**



The World's Largest Access Door Store.™



WBCA 2025