

SUBMITTAL SHEET

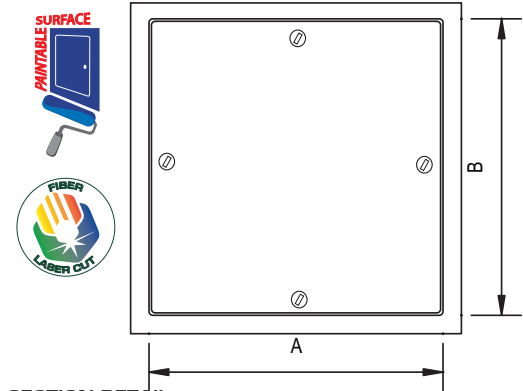
WALLS & CEILINGS



Flush, stainless steel cam latch opens with screwdriver



FRONT ELEVATION



THE WILLIAMS BROTHERS ADVANTAGE

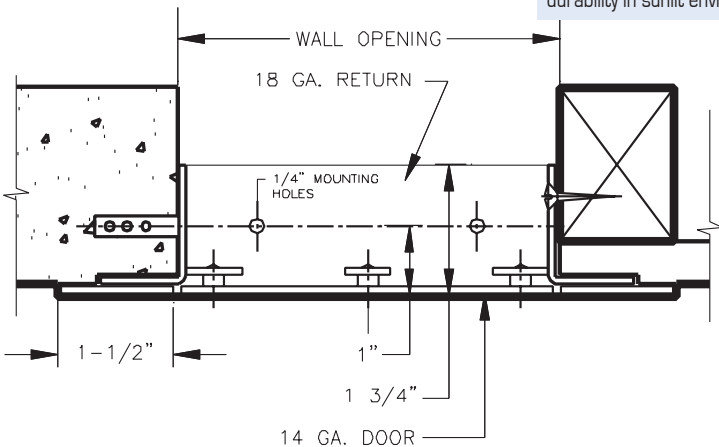
Durability: Taber Abrasion Tested - Withstood 4,550 cycles (ASTM D4060) with a wear index of 91.1 for a durable, long-lasting finish.

Corrosion Resistance: Salt Spray Tested - Withstood 48 hours of ASTM B117 exposure with only slight edge rusting, demonstrating excellent resistance to harsh environments.

UV Resistance: Tested to ASTM G155 & G154 standards - Withstood 48 hours of continuous UV exposure with negligible visual change, ensuring color stability and finish durability in sunlit environments.



SECTION DETAIL



Designed with the same quality features as our GP Premium door, but primarily designed for use in confined areas. Simply unscrew the cam latches, and the panel can be easily removed. The frame is laser cut from one sheet of steel for visual aesthetics.

1. When a door increases in size, more cams are added for security in the ceiling
2. For requests on clear opening after door installed, please email info@wbdoors.com
3. All installation holes must be used for proper door functionality and security
4. For custom sizes, please reach out to info@wbdoors.com
5. Clear opening may be impeded by structural or functional parts on door
6. Safety Chains will be provided with oversize doors greater than 48 x 48 and all sizes of removable panel doors
7. Drawings of any door can be requested through info@wbdoors.com

SPECIFICATIONS:

Door: 14 ga. steel

Trim: 16 ga. steel

Finish: Primed white baked enamel, **paintable surface**

Latches: Flush, stainless steel cam latches on all 4 sides. 24 x 24 and above come with safety chains.

OPTIONS (at additional cost)

Finishes:

- Stainless Steel Type 304 No. 4 Satin Finish Brushed
- Stainless Steel Type 316 No. 4 Satin Finish Brushed

Options: (additional cost)

- Mortise lock and locks by others
- WB Key Cylinder Locks - keyed alike 2 keys per door
- Neoprene gasket, 4 sides
- Special sizes available
- _____

✓	Model No.	Door Size W x H	Wall Opening	Cam Latches	Ship Wt. Lbs.
	RP 110	6 x 6	6 1/4 x 6 1/4	4	4
	RP 110	8 x 8	8 1/4 x 8 1/4	4	5
	RP 110	8 x 12	8 1/4 x 12 1/4	4	6
	RP 110	8 x 16	8 1/4 x 16 1/4	4	8
	RP 110	10 x 10	10 1/4 x 10 1/4	4	6
	RP 110	12 x 12	12 1/4 x 12 1/4	4	8
	RP 110	12 x 16	12 1/4 x 16 1/4	4	10
	RP 110	12 x 18	12 1/4 x 18 1/4	4	11
	RP 110	12 x 24	12 1/4 x 24 1/4	4	15
	RP 110	14 x 14	14 1/4 x 14 1/4	4	10
	RP 110	14 x 24	14 1/4 x 24 1/4	4	14
	RP 110	16 x 16	16 1/4 x 16 1/4	4	13
	RP 110	16 x 20	16 1/4 x 20 1/4	4	16
	RP 110	16 x 24	16 1/4 x 24 1/4	4	17
	RP 110	18 x 18	18 1/4 x 18 1/4	4	14
	RP 110	18 x 24	18 1/4 x 24 1/4	4	18
	RP 110	18 x 36	18 1/4 x 36 1/4	4	29
	RP 110	20 x 20	20 1/4 x 20 1/4	4	17
	RP 110	20 x 24	20 1/4 x 24 1/4	4	21
	RP 110	20 x 30	20 1/4 x 30 1/4	4	23
	RP 110	22 x 22	22 1/4 x 22 1/4	4	22
	RP 110	22 x 24	22 1/4 x 24 1/4	4	23
	RP 110	22 x 30	22 1/4 x 30 1/4	4	25
	RP 110	22 x 36	22 1/4 x 36 1/4	4	32
	RP 110	24 x 24*	24 1/4 x 24 1/4	8	24
	RP 110	24 x 30*	24 1/4 x 30 1/4	8	27
	RP 110	24 x 36*	24 1/4 x 36 1/4	8	35
	RP 110	24 x 48*	24 1/4 x 48 1/4	8	43
	RP 110	30 x 30*	30 1/4 x 30 1/4	8	32
	RP 110	30 x 36*	30 1/4 x 36 1/4	8	39
	RP 110	32 x 32*	32 1/4 x 32 1/4	8	35
	RP 110	36 x 36*	36 1/4 x 36 1/4	8	44
	RP 110	36 x 48*	36 1/4 x 48 1/4	8	57
	RP 110	48 x 48*	48 1/4 x 48 1/4	12	70

*Larger sizes come with safety chains

Project: _____ Date: _____
 Contractor: _____ Architect: _____
 Sizes: _____ Quantity: _____ App Initials: _____

1330 Progress Drive • Front Royal, VA 22630 • Phone: 1-800-255-5515 • www.wbdoors.com



The World's Largest Access Door Store.™

