

*The World's Largest Access Door Store.™*



WBdoors.com

## Access Doors/ Panels

- General Purpose Access Doors
- Access Doors with Window
- Vented/Louvered Doors
- Fire Rated Access Doors
- Drywall/Plaster Access Doors
- Phantom™ Series All Drywall Hidden Ceiling Access Panels
- Acoustical Tile Access Doors
- Touch Latch Access Door
- Security Access Doors
- Aluminum Access Doors
- Airtight/Watertight Access Door (Stainless Steel also)
- Plastic Access Doors
- Duct Access Doors

## Specialty Access Doors/Panels

- Recessed Access Doors
- Sound Rated Access Door
- Exterior Access Doors
- Rain Guard Door with Insect Net Standard
- T-Bar/Suspended Ceiling Panels

[www.wbdoors.com](http://www.wbdoors.com)  
[www.safetyone.com](http://www.safetyone.com)

1330 Progress Drive  
Front Royal, VA 22630  
Call 800-255-5515 for  
Phone Support  
7:30 am to 10 pm EST Mon - Fri



## WB Universal Non-Rated Access Doors



**GP 100 Series**  
Laser Cut One Piece Frame  
14 ga. door

**UAD 200 Series**  
Piano Hinge, 16 ga. door

**Basic 300 Series**  
Cost Effective, 18 ga. door



**GP LV 103 Louvered**  
with vents

**GP 101 Draftstop**  
with gasket

**GP VIS 100 Viewport**  
with window

**HG SEC 1100**  
High Security, 10 ga.

**GP SS 100**  
Stainless Steel

**WB AL 1500**  
Aluminum Insulated



**DW 405 Phantom™**  
Drywall Hidden  
Panel Lift and Shift

**STC 650 Sound**  
Acoustical Control  
with STC rating

**DWAL 414**  
Tile Ready  
Touch Latch

**EXT 1350 Ultra**  
Insulated Exterior with  
Interior Release

**EXT RG 1400**  
Rain Guard  
Vented, Galva Coat

**ADWT Airtight/  
Watertight**  
Tested for Air & Water



**MAP 1850 Hinged**  
Flush Non-Rated  
Plastic Door

**MAP 1800**  
Reversible  
Plastic Door

**WIN 1700 Series**  
Insulated Walk-In  
Duct Door

**BEFORE**

The TB 1210 Aluminum Drop-In Ceiling door simply drops into the 1" steel stud grid.

**AFTER**

**PROUDLY**  
MADE IN VIRGINIA-USA



## WB Fire Rated Access Doors



**FR 800 Series**  
Standard Flush  
20 ga. door

**FR SS 800 Series**  
Stainless Steel

**FRU 810 Series**  
with Key Lock  
20 ga. door

**FR-C 800 Series**  
Ceilings 16 ga. door  
(max size 24" x 48")  
(2017 Approved for 1 hr ceiling)



## Product Spotlight: DW 405 Phantom™ Series All Drywall Ceiling Panel

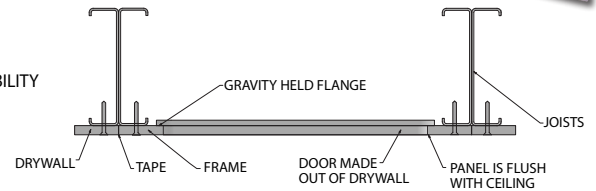
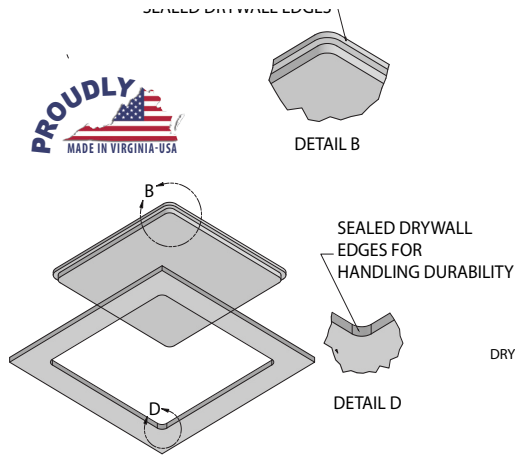
- DW 405 Phantom™ Series
- Made out of type X fire resistant drywall gypsum board that is moisture, mold, and mildew resistant
- Virtually invisible.
- Made in USA.
- Fast custom sizes.
- Easy installation.
- Paintable.
- All drywall construction.
- Patent Pending.



**CEILING  
ONLY**

**WB DW 405 Phantom™ Series:**

6 x 6	12 x 12	20 x 20
8 x 8	14 x 14	22 x 22
9 x 9	16 x 16	24 x 24
10 x 10	18 x 18	



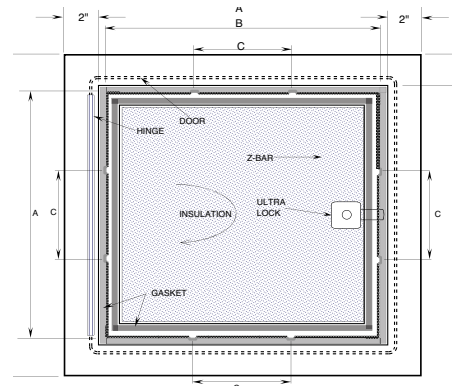
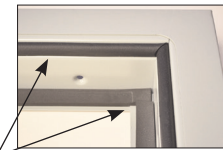
**Patent Pending  
Invented by Gabriel Williams**

## Product Spotlight: EXT 1350 Ultra Series Access Door

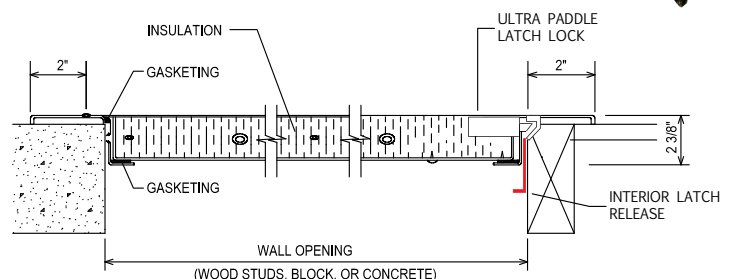
- One of a kind exterior door.
- Double seal gasket.
- Outdoor applications.
- Opens from the inside.
- Insulated and locking.
- Perfect for crawl spaces.
- Custom sizes available.



**Double Seal Gasketing**



**Ultra Paddle  
Latch  
Lock w/151  
key**



**www.wbdoors.com**

1330 Progress Drive  
Front Royal, VA 22630  
Call 800-255-5515 for  
Phone Support  
7:30 am to 10 pm EST Mon - Fri





## Fire Extinguisher Cabinets

- Cabinets available for 5, 10, & 20 lb. Extinguishers
- Stainless Steel Cabinets
- Fire Rated Cabinets
- Aluminum Cabinets
- Outdoor/Weather Resistive Cabinets
- Semi-Recessed
- Fully Recessed
- Surface Mounted

## Fire Extinguishers

- ABC-Steel Cylinder Dry Chemical Fire Extinguishers
- CO2 Aluminum Cylinder Carbon Dioxide Fire Extinguishers

## Hose/Storage

- Hose Storage Cabinet
- Hydrant House



SN-Sonoma Series Cabinets, 18 ga.



EL-Elite Architectural Series Cabinets, 16 ga.



Classic Premium Series, 20 ga.



Bubble Canopy (BC) 16 ga.



HDOC-Heavy Duty Outdoor, 16 ga.



ABC Fire Extinguishers



PC-Plastic Cabinets



TN-TITAN Series Aluminum

CM 1101-Outdoor Hose Storage  
57" W x 48" H x 15" D (without legs)



16 ga.



16 ga.

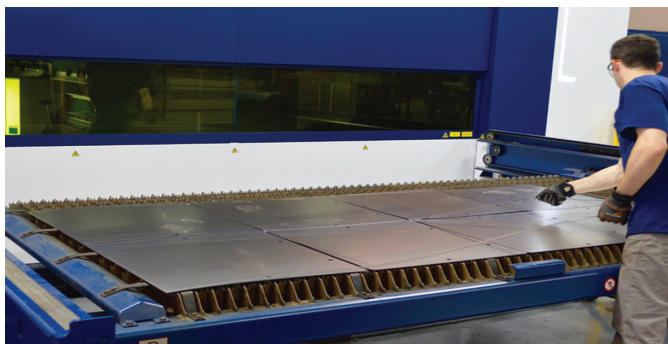
Hose and Hydrant House, Walk-In Cabinet, 65 3/4" W x 72" H x 67 1/4" D



Gabriel Williams, Plant Manager, inspects the access doors ready for the next phase.

## Did You Know?

- Most of our product is manufactured in USA.



Above, preparing for safe shipping.

At left, finishing the laser operation of an access door.



## Product Spotlight: HDOC Heavy Duty Outdoor Cabinet

- Cabinets available for 5, 10, 20, and 30 lb. Extinguishers.
- Outdoor/weather resistive.
- Non-Rated surface mount.
- Available in red, black, or stainless.
- Ships with lock and gasket.
- Made in USA.
- Rain guard hood.



Available in  
Stainless Steel

HDOC-Heavy Duty  
Outdoor, 16 ga.  
Galvnealed Steel



## Product Spotlight: Elite Architectural Series Cabinets

- Cabinets available for 5, 10, and 20 lb. Extinguishers.
- Premium surface mounted, semi or fully recessed cabinets.
- Available in white, red, black, or stainless steel finishes.
- Fire Rated or Non-Rated.



Elite Series:  
127-EL, 116-EL,  
Stainless Steel:  
217-EL-SSF, 116-EL-SSF



[www.safetyone.com](http://www.safetyone.com)

1330 Progress Drive  
Front Royal, VA 22630

Call 800-255-5515 for  
Phone Support

7:30 am to 10 pm EST Mon - Fri





WBdoors.com

## Roof Hatches/ Floor Doors

- Galvanized Steel Roof Hatches
- Aluminum Roof Hatches
- Recessed/Tile Floor Doors
- Fire-Rated Floor Doors
- Flush Aluminum Floor Doors
- Roof Hatch Railing Systems
- Fire and Smoke Vents

## Access Ladders/ Safety Posts

- Roof Access Ladders
- Disappearing Attic Stairway
- Safety Posts and Ladder-Ups

www.wbdoors.com  
www.safetyone.com

1330 Progress Drive  
Front Royal, VA 22630  
Call 800-255-5515 for  
Phone Support  
7:30 am to 10 pm EST Mon - Fri



## WB Roof and Floor Access Division



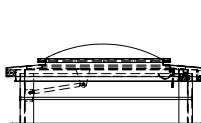
RH Galvanized  
Steel Roof Hatch



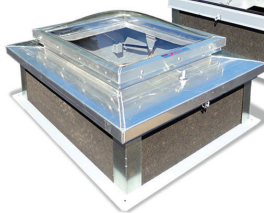
FD-P 8550 Fire  
Rated Floor Hatch



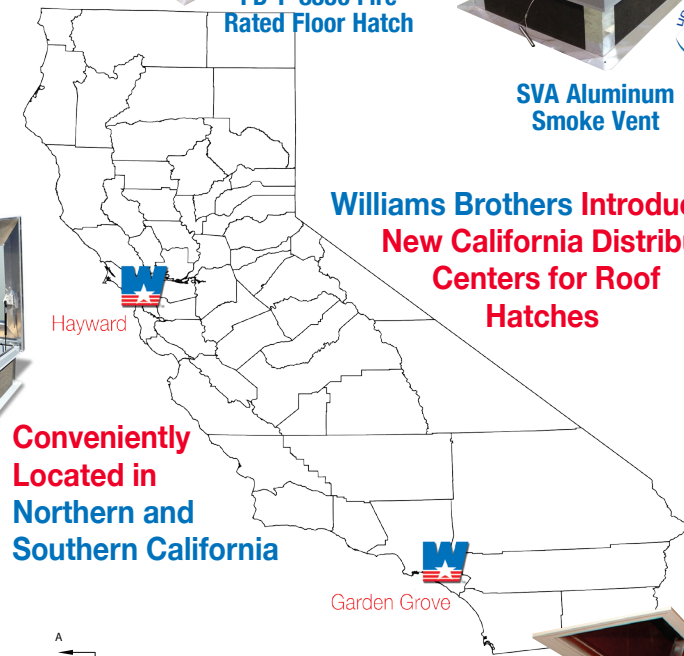
SVA Aluminum  
Smoke Vent



RH-D  
Galvanized Steel  
Domed Skylight  
Roof Hatch

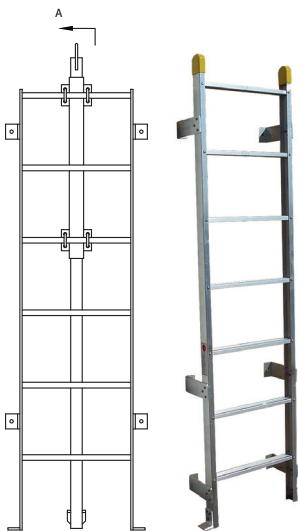


WB 6000 Roof  
Hatch Guard  
Railing System



Conveniently  
Located in  
Northern and  
Southern California

Williams Brothers Introduces  
New California Distribution  
Centers for Roof  
Hatches



Fixed Ladder &  
Safety Post



WB Super Simplex  
Disappearing Stairway

LOAD CAPACITY:  
**500lbs.**  
Combined Weight of  
User and Materials



## Fast, Safe, & Reliable Shipping

- We do what it takes to get your orders out.
- Prompt personal attention to every order.
- Delivery appointments available.
- Protected V-board packaging.
- **Services:** LTL, UPS, Private Courier, Expedited, Dedicated Services, Liftgates, Ocean and Air Delivery.
- Shipment notifications.

