

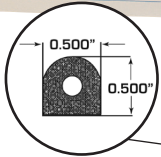
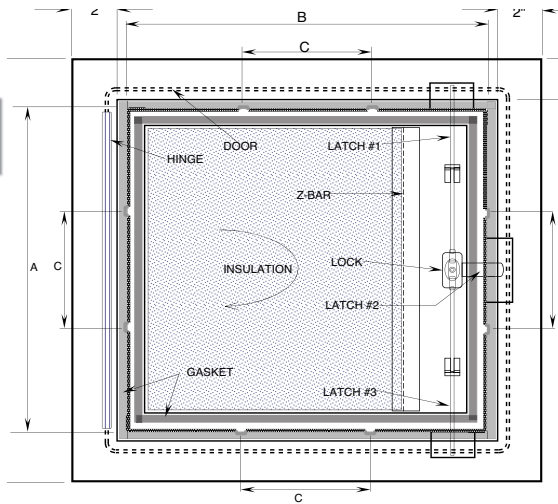
SUBMITTAL SHEET

WALLS & CEILINGS

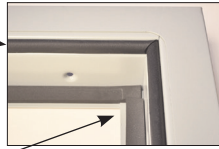
FRONT ELEVATION

SPECIFICATIONS:

- Door:** 16 ga. steel
- Trim:** 16 ga. steel
- Finish:** Zinc dipped Primed white baked grey enamel, paintable surface
- Latches:** Chrome plated "T" type handle with pivot rod 1 point catch. [3 point catch on 18 x 18 and above]. Key cylinder lock. **Opens with the outside handle only. No interior release.**
- Hinges:** Continuous piano hinge
- Insulation:** Double layer of 1" GreenGuard® Extruded Polystyrene insulation board, with R-Value @ 75°F Mean 5.0 x 2, FM approved*
- Gasket:** Open celled microcellular polyurethane on inside of door and closed cell neoprene sponge SC42 W/PSA stripping gasket on the back of the door
- Application:** For exterior purposes, weather resistive



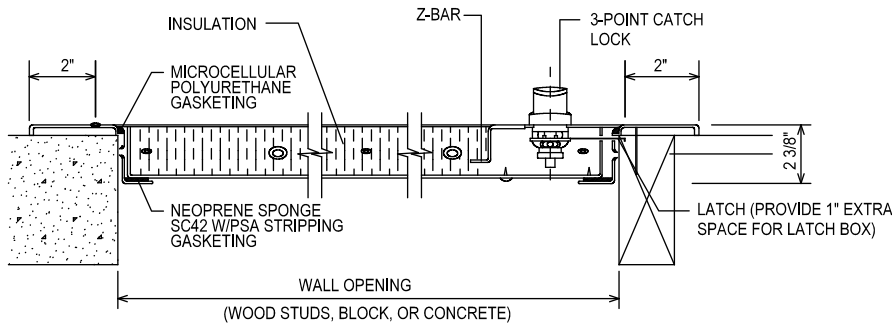
Microcellular polyurethane gasket



Neoprene sponge SC42 W/PSA stripping gasket applied on back inside edge



SECTION DETAIL



The one of a kind exterior access door is galvannealed** steel, insulated with 1" GreenGuard and includes two types of gasket. Weather resistive open celled microcellular polyurethane gasket and closed cell neoprene sponge SC42 W/PSA stripping gasket on inside for outdoor applications [certain saltwater areas might not be compatible].

* **GreenGuard®** Extruded Polystyrene insulation board, with R-Value @ 75°F Mean 5.0 x 2. R means resistance to heat flow. The higher the R-Value the greater the insulating power and energy saving capability. Compliance: BOCA 90-78, SBCCI 2228A, ICBO 4280, CA BHF TB 1334, MN Dept. of Energy Chapter 7640, CCMC 12722-L, Und. Lab. Inc.® See Classification Certificate A183. FM Approved.

** **Galvannealed steel:** The preferred coated steel for use in architectural applications.
 • Coated in zinc, heated to over 1000° F so iron is pulled from steel.
 • Iron mixes with zinc coating, making it harder, more scratch-resistant, uniform in appearance.
 • Galvannealed steel bonds better with paint, and better for welding.

✓	Model No.	Door Size W x H	Wall Opening *	Ship Wt. Lbs.
	EXT 1300	8 x 8	8 1/4 x 8 1/4	20
	EXT 1300	12 x 12	12 1/4 x 12 1/4	27
	EXT 1300	14 x 14	14 1/4 x 14 1/4	32
	EXT 1300	16 x 16	16 1/4 x 16 1/4	36
	EXT 1300	18 x 18	18 1/4 x 18 1/4	41
	EXT 1300	20 x 20	20 1/4 x 20 1/4	42
	EXT 1300	20 x 30	20 1/4 x 30 1/4	40
	EXT 1300	22 x 22	22 1/4 x 22 1/4	43
	EXT 1300	22 x 30	22 1/4 x 30 1/4	45
	EXT 1300	22 x 36	22 1/4 x 36 1/4	50
	EXT 1300	24 x 24	24 1/4 x 24 1/4	55
	EXT 1300	24 x 30	24 1/4 x 30 1/4	60
	EXT 1300	24 x 36	24 1/4 x 36 1/4	67
	EXT 1300	24 x 48	24 1/4 x 48 1/4	100
	EXT 1300	30 x 30	30 1/4 x 30 1/4	75
	EXT 1300	30 x 36	30 1/4 x 36 1/4	79
	EXT 1300	30 x 48	30 1/4 x 48 1/4	125
	EXT 1300	36 x 36	36 1/4 x 36 1/4	90
	EXT 1300	36 x 48	36 1/4 x 48 1/4	165

RELATED PRODUCTS

WB Exterior 1350 Ultra Series Access Door



Project: _____ Date: _____
 Contractor: _____ Architect: _____
 Sizes: _____ Quantity: _____ App Initials: _____

1330 Progress Drive • Front Royal, VA 22630 • Phone: 1-800-255-5515 • www.wbdoors.com

