

SUBMITTAL SHEET



Gasketing

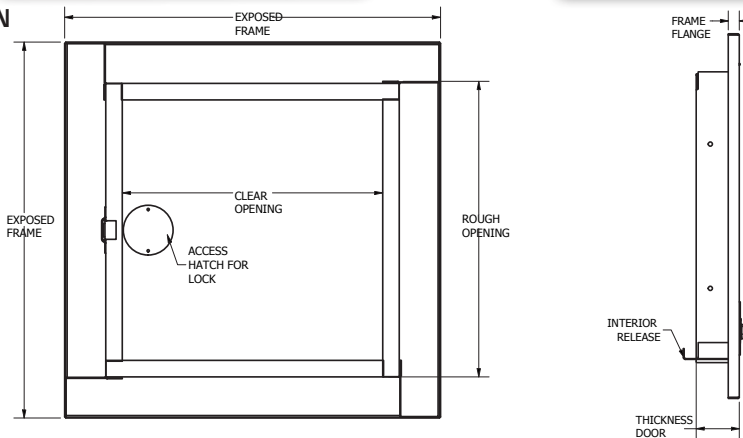


Paddle Latch Lock

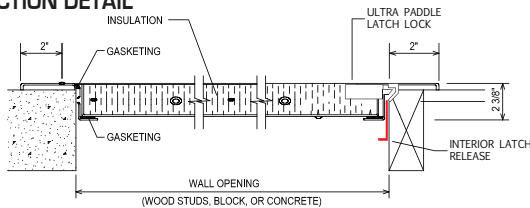
Interior exit handle and release



BACK ELEVATION



SECTION DETAIL



The one of a kind exterior access door is galvanized steel, insulated with 2" KINGS PAN GreenGuard and includes double seal gasketing. Weather resistive gasket on inside for outdoor applications (certain saltwater areas might not be compatible).

1. When a door increases in size, more cams are added for security
2. For requests on clear opening after door installed, please email info@wbdoors.com
3. All installation holes must be used for proper door functionality and security
4. For custom sizes, please reach out to info@wbdoors.com
5. Clear opening may be impeded by structural or functional parts on door
6. Drawings of any door can be requested through info@wbdoors.com

Project: _____ Date: _____
Contractor: _____ Architect: _____
Sizes: _____ Quantity: _____ App Initials: _____

1330 Progress Drive • Front Royal, VA 22630 • Phone: 1-800-255-5515 • www.wbdoors.com



The World's Largest Access Door Store.™

SPECIFICATIONS:

Door: 16 ga. galv. steel**

Trim: 16 ga. galv. steel**

Finish: Primed white baked enamel, paintable surface

Latches: Paddle latch lock and slam catch and interior latch release. (Over 24" x 24" has 2 ultra locks)

Hinges: Continuous piano hinge

Insulation: Single layer of GreenGuard® Extruded Polystyrene insulation board with R-Value of 10 @ 75°F mean.*

Gasket: Double seal gasketing

Application: For exterior purposes, weather resistive

OPTIONS (at additional cost)

☐ Special sizes available

☐ _____

Clear opening of door is 2" inches smaller than door size.

✓	Model No.	Door Size W x H	Wall Opening *	Clear Opening W x H	Ship Wt. Lbs.
	EXT 1350	12 x 12	12 1/4 x 12 1/4	10 x 10	27
	EXT 1350	14 x 14	14 1/4 x 14 1/4	12 x 12	30
	EXT 1350	16 x 16	16 1/4 x 16 1/4	14 x 14	35
	EXT 1350	18 x 18	18 1/4 x 18 1/4	16 x 16	40
	EXT 1350	20 x 20	20 1/4 x 20 1/4	18 x 18	42
	EXT 1350	20 x 30	20 1/4 x 30 1/4	18 x 28	44
	EXT 1350	22 x 22	22 1/4 x 22 1/4	20 x 20	44
	EXT 1350	22 x 30	22 1/4 x 30 1/4	20 x 28	45
	EXT 1350	22 x 36	22 1/4 x 36 1/4	20 x 34	50
	EXT 1350	24 x 24	24 1/4 x 24 1/4	22 x 22	55
	EXT 1350	24 x 30	24 1/4 x 30 1/4	22 x 28	60
	EXT 1350	24 x 36	24 1/4 x 36 1/4	22 x 34	67
	EXT 1350	24 x 48	24 1/4 x 48 1/4	22 x 46	100
	EXT 1350	30 x 30	30 1/4 x 30 1/4	28 x 28	65
	EXT 1350	32 x 32	32 1/4 x 32 1/4	30 x 30	77
	EXT 1350	30 x 36	30 1/4 x 36 1/4	28 x 34	79
	EXT 1350	30 x 48	30 1/4 x 48 1/4	28 x 46	85
	EXT 1350	36 x 36	36 1/4 x 36 1/4	34 x 34	90
	EXT 1350	36 x 48	36 1/4 x 48 1/4	34 x 46	165

* **GreenGuard®** Extruded Polystyrene insulation board, with R-Value of 10 @ 75°F mean. R means resistance to heat flow. The higher the R-Value the greater the insulating power and energy saving capability. Compliance: BOCA 90-78, SBCCI 2228A, ICBO 4280, CA BHF TB 1334, MN Dept. of Energy Chapter 7640, CCMC 12722-L, Und. Lab. Inc.® See Classification Certificate A183. FM Approved.

** **Galvanized steel:** The preferred coated steel for use in architectural applications.

- Coated in zinc, heated to over 1000° F so iron is pulled from steel.
- Iron mixes with zinc coating, making it harder, more scratch-resistant, uniform in appearance.
- Galvanized steel bonds better with paint, and better for welding.

STC-63



NOW SOUND TESTED!

- The **EXT1350 - Ultra Series Access Door** has officially undergone rigorous sound testing, delivering verified acoustic performance.
- **Certified Performance:** Engineered to meet industry standards, ensuring noise reduction for enhanced sound control.
- **Proven Results:** Backed by laboratory testing, providing confidence in its superior acoustic capabilities.
- **Sound-Sensitive Spaces:** Perfect for hotels, hospitals, offices, and any environment where noise control matters.
- **Upgrade with Confidence:** The **EXT1350** now combines premium durability with tested and certified sound performance.



BuyOnline
WBCA 2024