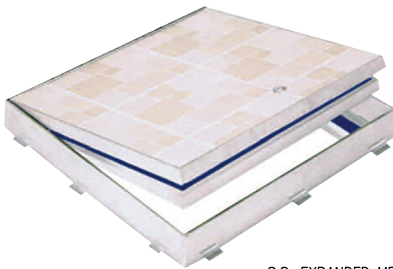
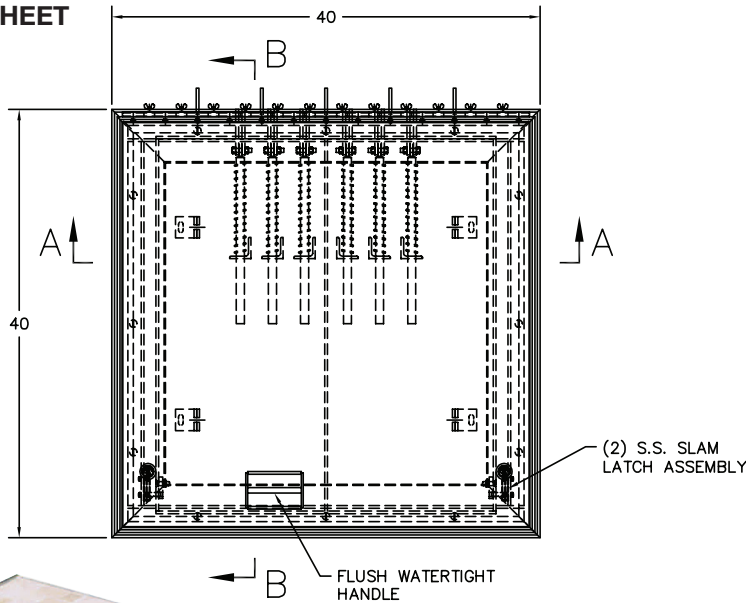
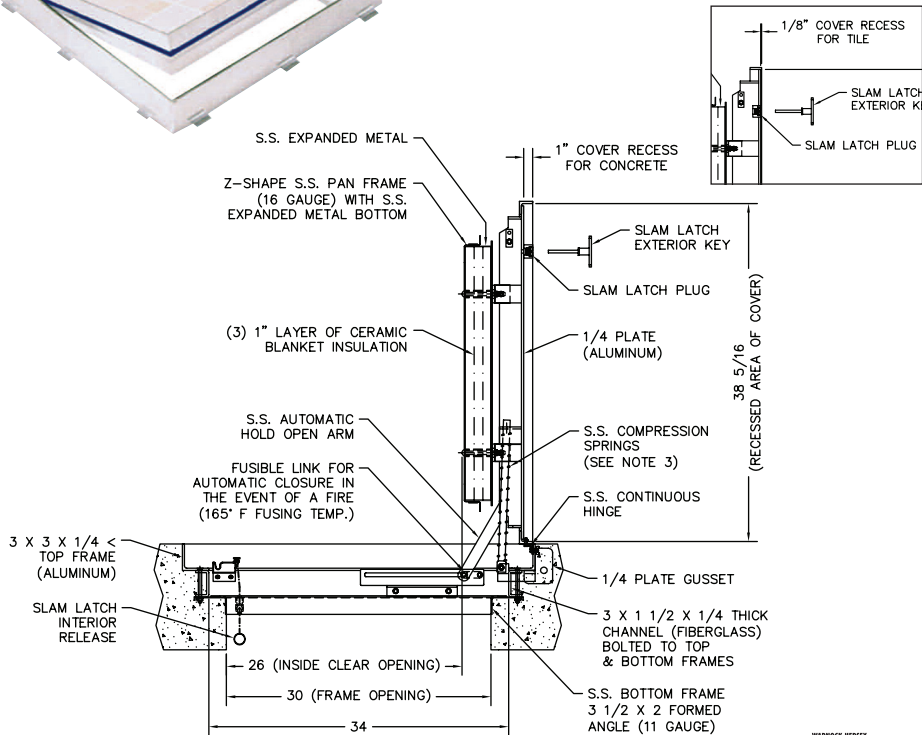


**SUBMITTAL SHEET**

**FRONT ELEVATION**



**SECTION DETAIL**



**SECTION B-B  
 (WITH DOOR OPEN)**

**SPECIFICATIONS:**

**Cover:** aluminum, 1" (concrete) or 1/8" (tile) recess reinforced for 150 psf [732 kg/m<sup>2</sup>] live load, fitted with thermal-rated composite fire panel, tested for up to 2 hours per NFPA 288 (ASTM E119).

**Frame:** Thermal-break frame with aluminum upper frame and stainless steel lower frame.

**Hinge:** Type 316 stainless steel.

**Spring Actuators:** Stainless steel compression springs contained within the door assembly.

**Automatic Hold-open And Closing Mechanism:** Aluminum hold-open arm with red vinyl grip to automatically hold the cover in the 90 degree position. Hold-open arm incorporates a mechanism to automatically close and latch the cover when heat breaks a UL-listed fusible link.

**Latch:** Two-point slam latch.

**Material/Finish:** Cover and frame are mill finish aluminum. Hardware is stainless steel.

**Installation:** Door is designed for installation in dry, interior locations only. Installation shall be in accordance with the manufacturer's instructions.

**Flooring:** Recessed for thicker architectural flooring (ceramic, stone, terrazzo, etc.).

**Fire Rated:** Warnock Hersey tested to 2 hours rating, tested to NFPA 288 (ASTM E119).

Model No.	Size (inches) W x L	Ship Wt. Lbs.
FD-P 8550	24 x 24	80
FD-P 8550	24 x 36	140
FD-P 8550	24 x 48	160
FD-P 8550	30 x 30	130
FD-P 8550	30 x 36	160
FD-P 8550	36 x 36	190
FD-P 8550	36 x 48	240
FD-P 8550	42 x 42	250
FD-P 8550	48 x 48	280

**Steel available upon request.  
 Call for submittal sheet.**

Project: \_\_\_\_\_ Date: \_\_\_\_\_  
 Contractor: \_\_\_\_\_ Architect: \_\_\_\_\_  
 Sizes: \_\_\_\_\_ Quantity: \_\_\_\_\_ App Initials: \_\_\_\_\_

1330 Progress Drive • Front Royal, VA 22630 • Phone: 1-800-255-5515 • [www.wbdoors.com](http://www.wbdoors.com)



**Family Owned & Operated**  
 Since 1990



[WBdoors.com](http://WBdoors.com)

**BuyOnline**

WBCA 2019