

SUBMITTAL SHEET

WALLS & CEILINGS

Tamper proof snake-eye screws



WB-11B

A special snake eye screwdriver is required to open this door



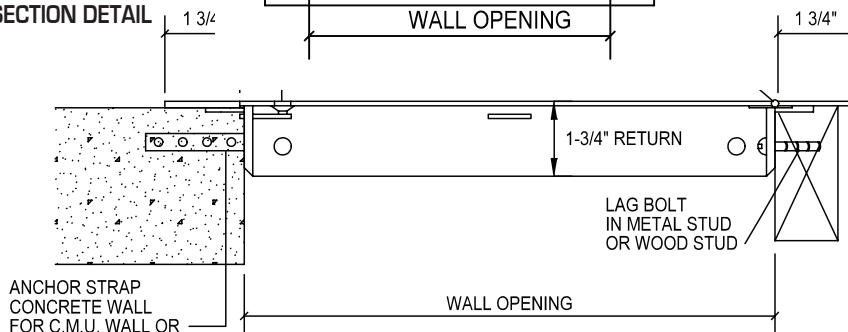
WB-23



FRONT ELEVATION



SECTION DETAIL



This door assures medium security whenever it is necessary under institutional conditions. Most detention buildings and mental care facilities require access to vital services in or behind walls, shafts and stairwells.

1. When a door increases in size, more cams are added for security
2. For requests on clear opening after door installed, please email info@wbdoors.com
3. All installation holes must be used for proper door functionality and security
4. For custom sizes, please reach out to info@wbdoors.com
5. Clear opening may be impeded by structural or functional parts on door
6. Drawings of any door can be requested through info@wbdoors.com

SPECIFICATIONS:

Door: 12 ga. steel.

Trim: 16 ga. steel.

Hinge: Semi-concealed piano hinge. Allows opening to 180°.

Anchor: Heavy steel, welded to frame.

Lock: Counter sunk tamperproof screws

Finish: Primed white baked enamel, **paintable surface**

OPTIONS (at additional cost)

Finishes:

☐ Stainless Steel Type 304 No. 4 Satin Finish Brushed

☐ Stainless Steel Type 316 No. 4 Satin Finish Brushed

Options: (additional cost)

☐ Mortise lock and locks by others

☐ WB Key Cylinder Locks - keyed alike 2 keys per door

☐ Weather resistive neoprene gasket all 4 sides (Closed cell sponge, blend of Neoprene/EPDM/SBR. Meets ASTM D-1056: SCE 41, RE 41, 2A1; substrate UL 94HF-1 recognized)

☐ Special sizes available

☐ _____

✓	Model No.	Door Size W x H	Wall Opening	Tamper Proof Screws	Ship Wt. Lbs.
	MD SEC 1000	12 x 12	12 1/4 x 12 1/4	3	22
	MD SEC 1000	16 x 16	16 1/4 x 16 1/4	3	31
	MD SEC 1000	18 x 18	18 1/4 x 18 1/4	3	36
	MD SEC 1000	24 x 24	24 1/4 x 24 1/4	4	52
	MD SEC 1000	24 x 36	24 1/4 x 36 1/4	4	73
	MD SEC 1000	36 x 36	36 1/4 x 36 1/4	5	103
	WB-23	Snake eye screwdriver			

RELATED PRODUCTS

WB HG SEC 1100 Series High Security Access Door



WBdoors.com

BuyOnline

WBCA 2024



The World's Largest Access Door Store.™

Project: _____ Date: _____
Contractor: _____ Architect: _____
Sizes: _____ Quantity: _____ App Initials: _____

1330 Progress Drive • Front Royal, VA 22630 • Phone: 1-800-255-5515 • www.wbdoors.com