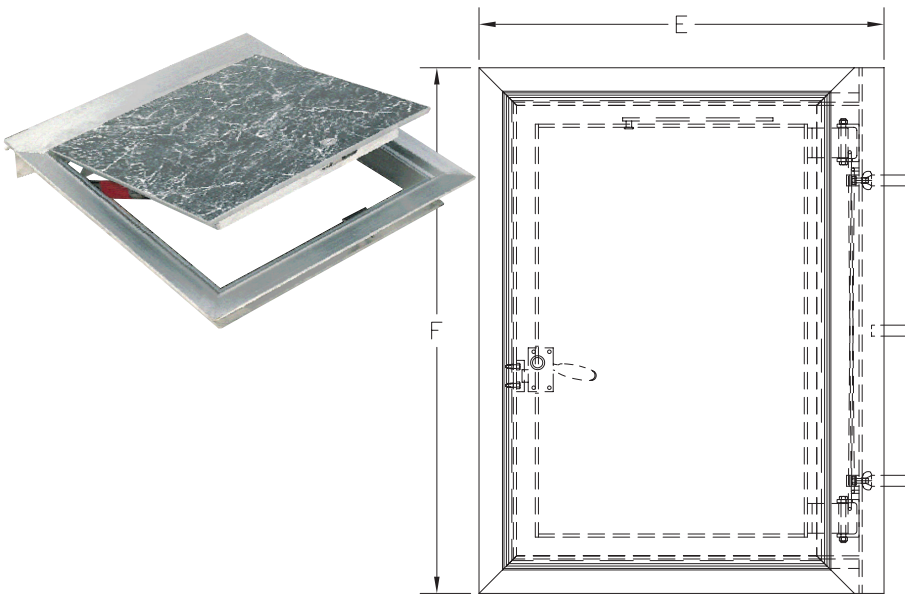


SUBMITTAL SHEET

FRONT ELEVATION



SPECIFICATIONS:

Cover: 1/4" [4.8mm] aluminum smooth plate cover reinforced for 300 psf live load and a 1/8" [3mm] recess to receive tile or carpet. Both cover and frame have a metal lip around the entire perimeter defining the recess. Equipped with a 316 stainless steel hold open arm with red vinyl grip that automatically keeps the cover in its upright, open position.

Frame: Extruded aluminum with an integral door seat on all four sides which has a groove to receive a cushion for noise dampening.

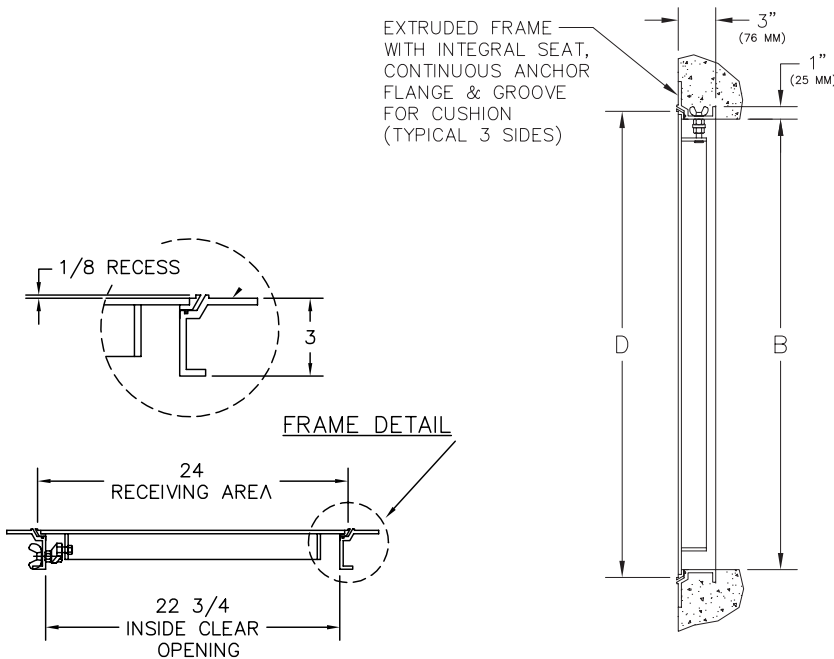
Hardware: 316 stainless steel hinges and tamper resistant bolts/lock nuts.

Security: Watertight 316 stainless steel slamlock with threaded plug, removable outside key, and fixed inside handle. The slamlock latches onto a 316 stainless steel striker plate that is bolted to the frame.

Finish: Aluminum cover and frame have mill finish which is protected during shipping and installation by an attached adhesive-backed vinyl material. All parts of the frame in contact with concrete have a coating of bituminous paint.

Installation: Installation shall be in accordance with the manufacturer's instructions.

SECTION DETAIL



OPTIONS (at additional cost)

- Steel
- Double door
- Special sizes available upon request

Model No.	Size (inches) W x L	Ship Wt. Lbs.
R-APS 8150	24 x 24	45
R-APS 8150	24 x 30	50
R-APS 8150	24 x 36	60
R-APS 8150	30 x 30	60
R-APS 8150	30 x 36	70
R-APS 8150	30 x 48	85
R-APS 8150	36 x 36	75
R-APS 8150	36 x 48	95
R-APS 8150	42 x 42	95

Double door available upon request.
Steel available upon request.
Call for submittal sheet.

Project: _____ Date: _____
 Contractor: _____ Architect: _____
 Sizes: _____ Quantity: _____ App Initials: _____

1330 Progress Drive • Front Royal, VA 22630 • Phone: 1-800-255-5515 • www.wbdoors.com