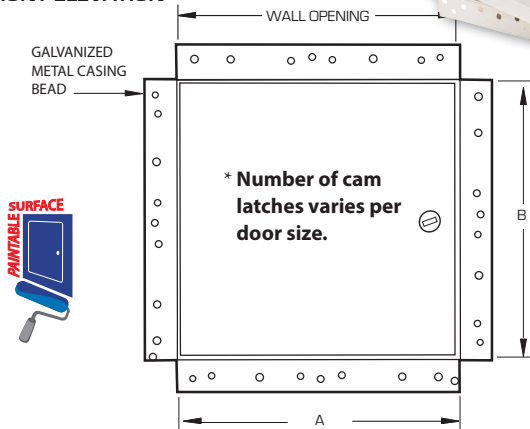


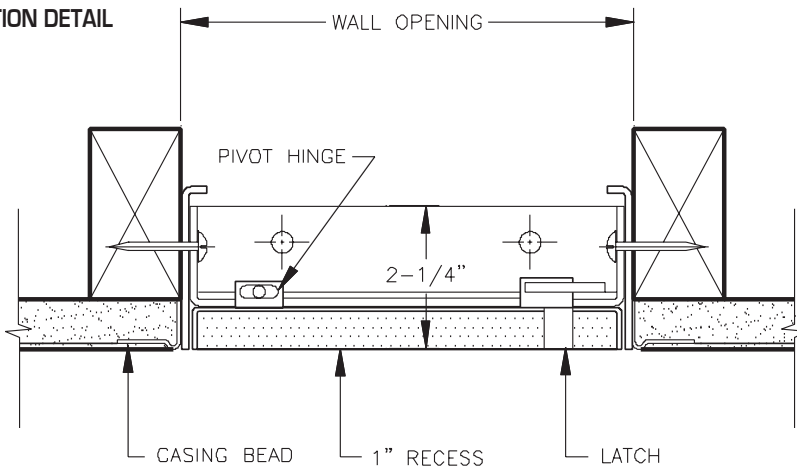
WALLS & CEILINGS



FRONT ELEVATION



SECTION DETAIL



Our recessed drywall door gives the option of installing a matching piece of drywall into the door panel thus keeping the continuity of the visual area.

1. When a door increases in size, more cams are added for security in the ceiling or wall
2. For requests on clear opening after door installed, please email info@wbdoors.com
3. All installation holes must be used for proper door functionality and security
4. For custom sizes, please reach out to info@wbdoors.com
5. Clear opening may be impeded by structural or functional parts on door
6. Drawings of any door can be requested through info@wbdoors.com

SPECIFICATIONS:

Door: 14 ga. steel, 5/8" recessed depth to accommodate drywall

Trim: 16 ga. steel. These models have a 1" wide perforated flange of 24 ga. galvanized steel for mounting purposes.

Hinge: Concealed pivot rod

Latches: Flush, stainless steel cam latch

Finish: Primed white baked enamel, **paintable surface**

OPTIONS (at additional cost)

Finishes:

- ☐ Stainless Steel Type 304 No. 4 Satin Finish Brushed
- ☐ Stainless Steel Type 316 No. 4 Satin Finish Brushed

Options: (additional cost)

- ☐ WB Cylinder lock, 2 keys per door, keyed alike
- ☐ 5/8" Gypsum Board installed (RDW 410 - 2)
- ☐ Weather resistive neoprene gasket all 3 sides [Closed cell sponge, blend of Neoprene/EPDM/SBR. Meets ASTM D-1056: SCE 41, RE 41, 2A1; substrate UL 94HF-1 recognized]
- ☐ Special sizes available
- ☐ _____

✓	Model No.	Door Size W x H	Wall Opening	Cam** Latches	Ship Wt. Lbs.
	RDW 410	8 x 8	8 1/4 x 8 1/4	1	5
	RDW 410	12 x 12	12 1/4 x 12 1/4	3	8
	RDW 410	12 x 24	12 1/4 x 24 1/4	4	15
	RDW 410	14 x 14	14 1/4 x 14 1/4	3	10
	RDW 410	16 x 16	16 1/4 x 16 1/4	3	13
	RDW 410	18 x 18	18 1/4 x 18 1/4	3	14
	RDW 410	18 x 36	18 1/4 x 36 1/4	5	29
	RDW 410	20 x 30	20 1/4 x 30 1/4	4	23
	RDW 410	22 x 36	22 1/4 x 36 1/4	5	32
	RDW 410	24 x 24	24 1/4 x 24 1/4	4	24
	RDW 410	24 x 30	24 1/4 x 30 1/4	4	27
	RDW 410	24 x 36 **	24 1/4 x 36 1/4	5	35
	RDW 410	24 x 48 **	24 1/4 x 48 1/4	6	43
	RDW 410	30 x 30 **	30 1/4 x 30 1/4	6	32
	RDW 410	30 x 36 **	30 1/4 x 36 1/4	6	38
	RDW 410	36 x 36 **	36 1/4 x 36 1/4	7	43
	RDW 410	36 x 48 **	36 1/4 x 48 1/4	8	53
	RDW 410	48 x 48 **	48 1/4 x 48 1/4	12	63

Please check ledger for the number of cam latches for your door size. ** Walls Only.

Project: _____ Date: _____
Contractor: _____ Architect: _____
Sizes: _____ Quantity: _____ App Initials: _____

1330 Progress Drive • Front Royal, VA 22630 • Phone: 1-800-255-5515 • www.wbdoors.com

RELATED PRODUCTS

WB DW 400 Series for Drywall



The World's Largest Access Door Store.™

