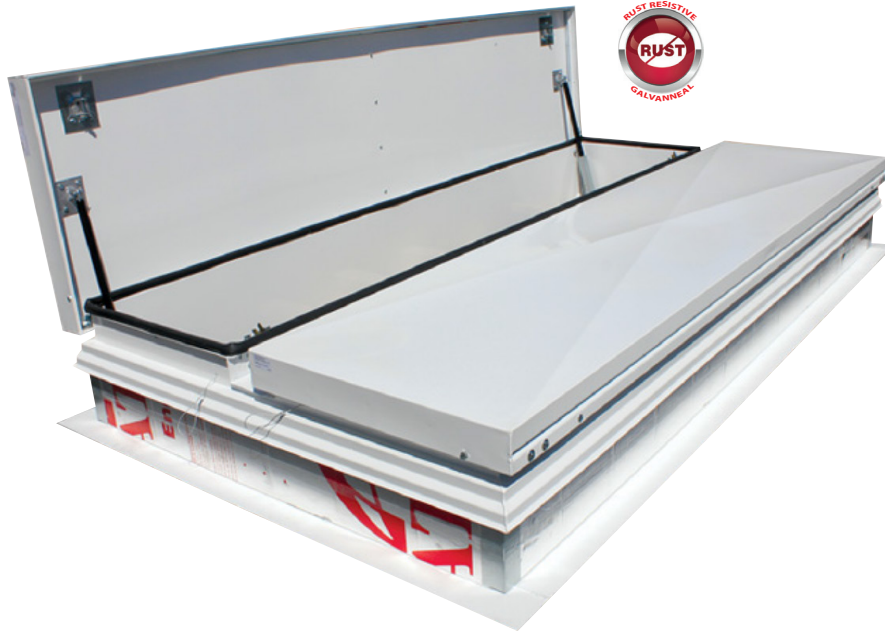
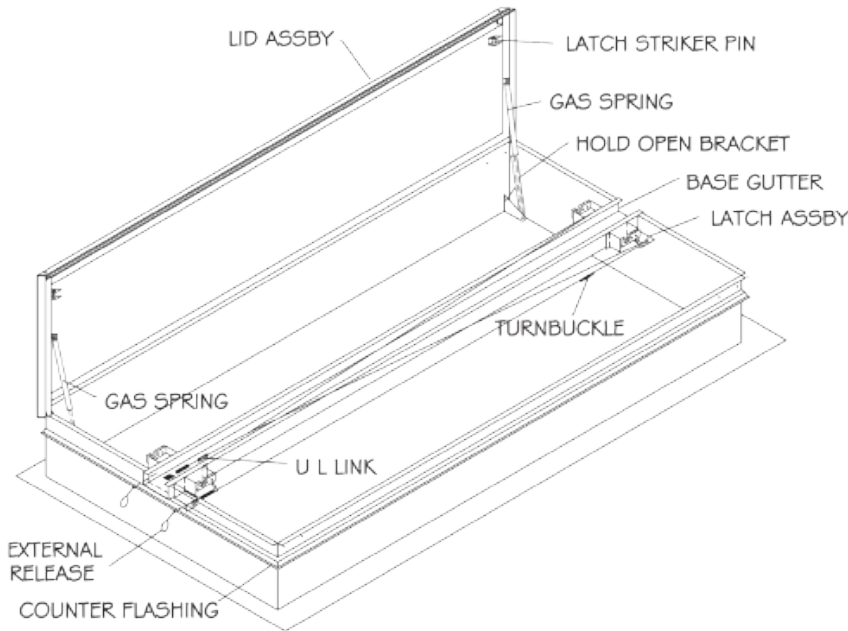


SUBMITTAL SHEET



SECTION DETAIL



SPECIFICATIONS:

Designed to provide an economical solution for fire ventilation by removing deadly smoke, heat, and gases from a burning building. Single leaf Smoke Vents are used for smaller areas that need venting, including elevator shafts and stairwells. Single leaf units are not U.L. Listed.

- 14 gauge G90 Galvanized Steel
- 12" high insulated curb
- UL Listed Fusible or McCabe Resettable Links
- Inside and Outside manual release
- High performance gas springs

Opening: Gas spring operators allow cover to open and close with ease. Inside and outside release allows for manual lid operation.

Door Latch: Self latching Slam Latch. Supplied standard with 165° UL Listed Fusible Link. Resettable McCabe link available.

Curb: 14 gauge galvanized steel with 1" thick fiberboard roof insulation at curb exterior. Curb is 12" high, with 3.375" wide bottom flange and pre-drilled mounting holes.

Hinge: Heavy duty galvanized steel / aluminum pintle hinges with 3/8" pin

Covers: Double-skin construction ("in box type design") with 1" cellulose insulation and a continuous EPDM foam weather/draft seal gasket that is attached to the inside of cover to provide a flush, tight fit. Designed to support a live load of 40lbs./sq. ft., the cover is 14 gauge galvanized steel with a 22 gauge galvanized steel inside liner.

Finish: Galvanized Steel: baker on polyester enamel paint

OPTIONS:

- Curb mount or Metal Building Flange
- Double-Dome Co-Polyester lids for daylighting
- Louvered curb for ventilation
- _____

Model No.	Size (inches) W x L	Ship Wt. Lbs.
WB SVG-DL	48 x 48	180
WB SVG-DL	48 x 72	230
WB SVG-DL	48 x 90	240
WB SVG-DL	48 x 96	250
WB SVG-DL	60 x 60	235
WB SVG-DL	60 x 72	240
WB SVG-DL	60 x 90	300
WB SVG-DL	60 x 96	310

Project: _____ Date: _____
 Contractor: _____ Architect: _____
 Sizes: _____ Quantity: _____ App Initials: _____

1330 Progress Drive • Front Royal, VA 22630 • Phone: 1-800-255-5515 • www.wbdoors.com



Family Owned & Operated
 Since 1990



BuyOnline
 WBCA 2019