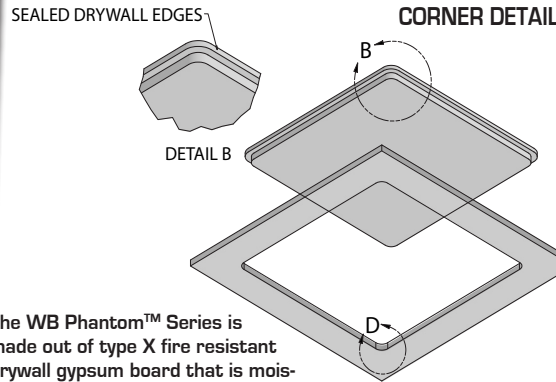


SUBMITTAL SHEET

CEILING ONLY

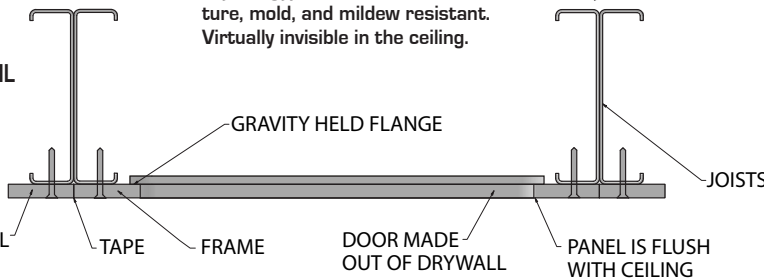
Patent Pending.
 Invented by Gabriel Williams



The WB Phantom™ Series is made out of type X fire resistant drywall gypsum board that is moisture, mold, and mildew resistant. Virtually invisible in the ceiling.



SECTION DETAIL



SPECIFICATIONS:

The **WB DW 405 Phantom™ Series** Drywall Ceiling Access Panel is a cost-effective, durable flush access panel for ceiling installation that is perfect for applications where a concealed appearance is required such as high luxury properties including hotels, apartment complexes, educational facilities, lobbies, and government buildings. Featuring lightweight, Type X fire and impact resistant gypsum board (drywall) construction. making them an excellent choice for use in residential and commercial bathrooms, locker rooms, showers, and more.

Door & Trim: 5/8" Frame and 1 inch thick door. Type XP fire resistant drywall gypsum, moisture, mold, and mildew resistant.

Finish: Composed of 100% recycled PURPLE paper on the face and back side. Completely paintable.

Meets and exceeds specs of GFRG access doors.

Physical Properties:

- Entirely of drywall
- The only GFRG access door **Sound Rated & Fire-rated**
- Impact resistant
- Cost effective
- Sealed edges for durability
- Moisture free and ready to match existing ceiling
- Made in Virginia - USA+

OPTIONS (at additional cost)

- Custom sizes available - fast
- Gasketing

✓	Model No.	Door Opening	Rough Opening	Ship Wt. Lbs.
	DW 405 Phantom	6 x 6	12 x 12	1.5
	DW 405 Phantom	8 x 8	14 x 14	2.5
	DW 405 Phantom	9 x 9	15 x 15	3
	DW 405 Phantom	10 x 10	16 x 16	3.5
	DW 405 Phantom	12 x 12	18 x 18	5
	DW 405 Phantom	12 x 16	18 x 20	6
	DW 405 Phantom	12 x 18	18 x 24	7
	DW 405 Phantom	12 x 24	18 x 30	7.5
	DW 405 Phantom	14 x 14	20 x 20	8
	DW 405 Phantom	14 x 20	20 x 26	8.5
	DW 405 Phantom	14 x 24	20 x 30	9
	DW 405 Phantom	16 x 16	22 x 22	9.5
	DW 405 Phantom	16 x 20	22 x 26	9.75
	DW 405 Phantom	16 x 24	22 x 30	10
	DW 405 Phantom	18 x 18	24 x 24	11
	DW 405 Phantom	18 x 20	24 x 26	11.5
	DW 405 Phantom	18 x 24	24 x 30	12
	DW 405 Phantom	20 x 20	26 x 26	12
	DW 405 Phantom	20 x 24	26 x 30	12.5
	DW 405 Phantom	22 x 22	28 x 28	13
	DW 405 Phantom	22 x 24	28 x 30	13.5
	DW 405 Phantom	22 x 30	28 x 36	14
	DW 405 Phantom	24 x 24*	30 x 30	14

* Sizes above 24 x 24 are made with aluminum reinforcement.



QAI FIRE-RATED UP TO 45 MINUTES

FIRE RATING CERTIFICATION The **WB DW-405 Phantom Series Access Door** has been successfully tested and listed by QAI Laboratories in accordance with ASTM E119 and CAN/ULC S101 standards for fire endurance. This product carries a **45-minute fire rating** for horizontal installation applications and is certified for a maximum size of **22" x 30" (559 mm x 762 mm)**.

Label Reference: QAI Listed Horizontal Access Door

Listing Number: Refer to individual serialized label per unit

Test Report: QAI Project No. BUR0542-ENG2

Complies With: ASTM E119, CAN/ULC S101

Manufactured By: The Williams Brothers Corporation of America
Made in the USA

Do not remove, paint, or cover the certification label. Follow all installation instructions provided by the manufacturer to maintain the fire rating.

STC-62 SOUND TESTED UP TO STC62



• The **WB DW 405 - Phantom Series Access Door** been lab tested for sound performance, ensuring superior noise control.

• **Certified Performance:** Engineered and verified to meet industry sound transmission standards.

• **Proven Results:** Tested to enhance quiet environments by minimizing noise transfer.

• **Sound-Sensitive Spaces:** Ideal for hotels, offices, hospitals, and high-end residential applications.

• **Seamless Design, Enhanced Functionality:** The **Phantom Series** now delivers both aesthetic appeal and tested acoustic performance.

Project: _____ Date: _____

Contractor: _____ Architect: _____

Sizes: _____ Quantity: _____ App Initials: _____

1330 Progress Drive • Front Royal, VA 22630 • Phone: 1-800-255-5515 • www.wbdoors.com



The World's Largest Access Door Store.™

