

DETAIL & SUBMITTAL SHEET

by Bilco



SPECIFICATIONS:

Material: Cover and frame are 1/4" aluminum

Cover: Diamond-pattern tread plate reinforced for 150 psf (732 kg/m²) live load

Frame: Extruded aluminum angle frame with strap anchors bolted around the perimeter

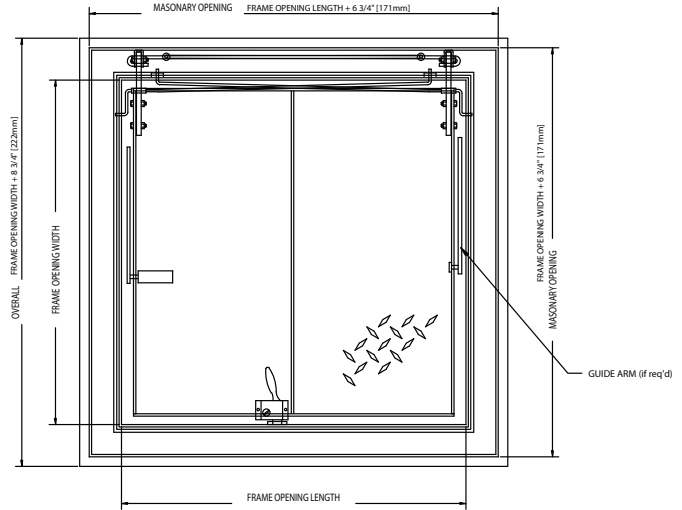
Hinges: Cast steel cam-action hinges that are concealed from the exterior of the door. Latch Type 316 stainless steel slam lock with fixed interior handle and removable exterior turn/lift handle

Lift Assistance: Torsion bars that pivot on cam-action hinges. Automatic hold-open arm with grip handle release

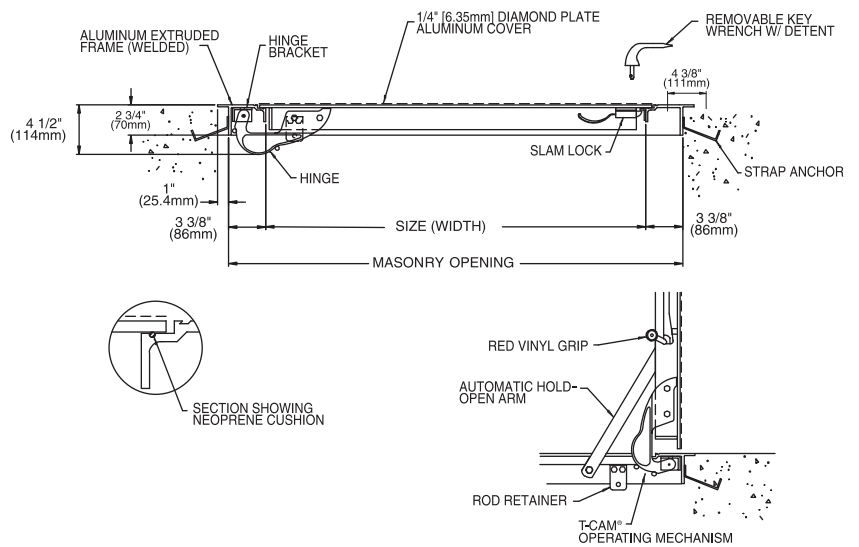
Finish: Mill finish aluminum with a bituminous coating applied to the exterior of the frame

Hardware: Zinc plated/chromate sealed

FRONT ELEVATION (Double Door)



SECTION DETAIL



✓	Item No.	Door Opening W x H	Material	Ship Wt. Lbs.
	Bilco Type K-1	24 x 24	Aluminum	50
	Bilco Type K-2	30 x 30	Aluminum	65
	Bilco Type K-3	36 x 30	Aluminum	77
	Bilco Type K-4	36 x 36	Aluminum	86
	Bilco Type K-5	42 x 42	Aluminum	109

KD available upon request (double leaf)

Project: _____ Date: _____

Contractor: _____ Architect: _____

Sizes: _____ Quantity: _____ Approval Initials: _____



Corporate Office: 1330 Progress Drive • Front Royal, VA 22630
Phone: 1-800-255-5515 • Fax: 1-800-822-5001

www.wbdoors.com