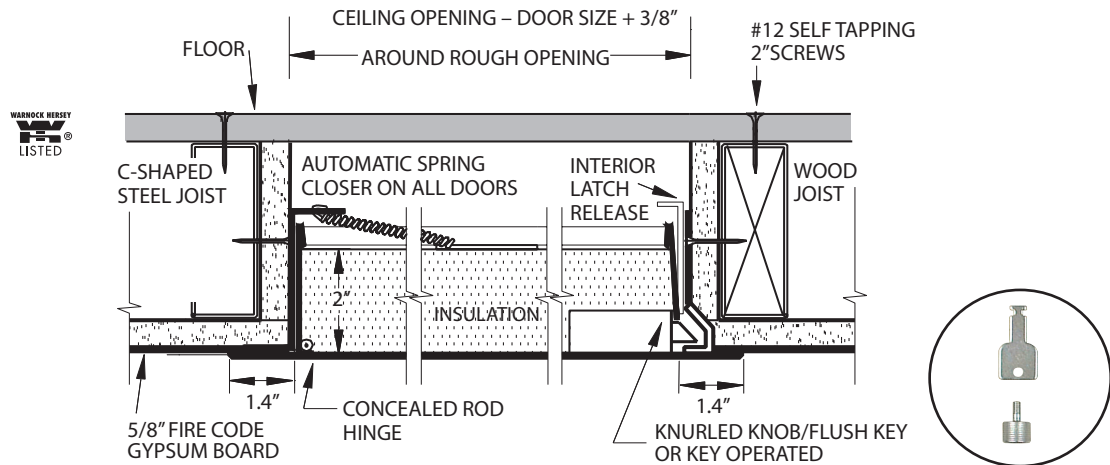




WB-FR 800 SERIES 1 hr Fire Rated Access Door

CEILING INSTALLATION

1 HOUR CEILING INSTALLATION (DOORS 8" X 8" UP TO & INCLUDING 24" X 36" ONLY)



1. **CEILING OPENING DIMENSIONS:** One hour fire rated floor ceiling assembly, with one layer of 5/8" approved gypsum ceiling membrane, and minimum 2 x 10 solid sawn wood joist or C-shaped steel joist. Rough opening dimensions should be 1-5/8" larger than return frame size.
2. **OPENING INTERIOR:** Frame all four sides of the opening with approved joist framing. Opening should be lined with 5/8" gypsum board using screws spaced 18" O.C. maximum. Minimum of 2 screws per side. Screw length for steel = 1-1/8", for wood = 1-1/4".
3. **Ceiling opening is return frame width + 3/8" x return frame height + 3/8"** (a notched out area 2-1/2" long x 2-1/2" wide x 1" deep is required for the bolt cover).
4. **LOCATION/PLACEMENT:** Position the door in furred opening, mark location on joists using holes in latch & hinge sides of return frame as marking guides.
5. **FINAL INSTALLATION:** Position door leaving masonry anchor strap flat against return frame and attach with #12 drywall screws.
6. **ADJUSTMENT:** If it binds, shim to remove any racking of return frame at attachments to joists. Fill any gaps between the return frame and the gypsum-lined joists that are greater than 1/4" wide with mineral wool or gypsum joint compound.
7. **CLOSER SPRINGS:** Doors 16 x 16 and larger are supplied with extra spring. Attach this spring from the pan on back of door to framing of floor above to insure that door is self-closing. This is the responsibility of the installer. Failure to do so could result in serious injury.
8. **PRE-INSTALLATION:** Before installing the door, bend lock release bracket inward causing it to stay in up position.
9. **SELF-CLOSING:** Test to insure self-closing, door must be released from at least 60 degrees from horizontal.



1-800-255-5515 wbdoors.com