

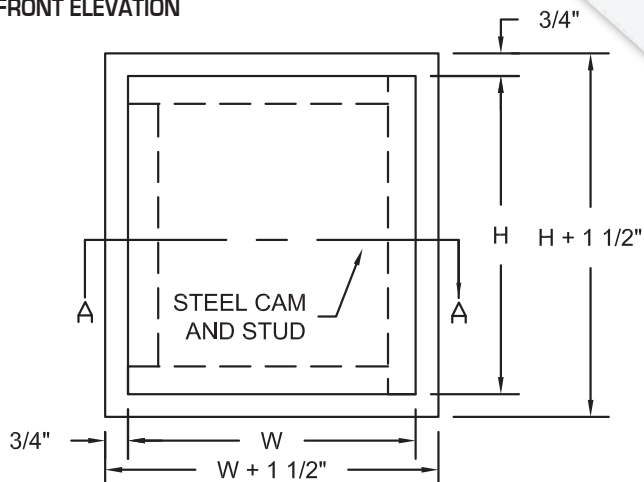
SUBMITTAL SHEET

**WALLS &
CEILING**

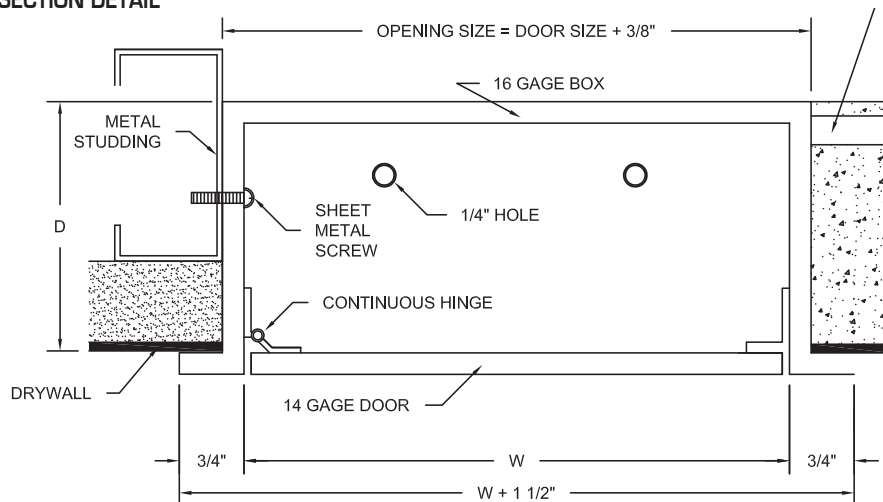
Flush, stainless
steel cam latch
opens with screw-
driver



FRONT ELEVATION



SECTION DETAIL



The WB-VB Recessed Valve Boxes are designed to provide easy, convenient access to all types of valves and controls that need to be concealed in the wall, but protected by a fully enclosed box. The depth of the valve box can be modified to meet all the valve and control requirements. When required, vision panels, louvers, engraved plates can be supplied, along with special holes for pipes or conduits.

SPECIFICATIONS:

Door: 14 ga. steel

Box: 16 ga. steel. Fully enclosed, completely attached to frame. When required, box can be made with open back

Holes: 1/4" diameter for anchoring to framing.

Finish: Primed white baked enamel, **paintable surface**

Latches: Flush, standard stainless steel cam latch or key cylinder lock (option).

Hinge: Concealed, continuous piano type hinge.

OPTIONS (at additional cost)

- ☐ Stainless Steel Type 304 No. 4 Satin Finish Brushed
- ☐ Stainless Steel Type 316 No. 4 Satin Finish Brushed
- ☐ Cylinder lock, 2 keys per door, keyed alike
- ☐ Ultra paddle latch and keys
- ☐ Plexiglass Vision Panel for easy visual access
- ☐ Special sizes available
- ☐ _____

✓	Model No.	Box Size W x H x D (in.)	Wall/Ceiling Opening W x H (in.)	Ship Wt. Lbs.
	WB-VB	8 x 8 x 4	8 3/8 x 8 3/8	4
	WB-VB	8 x 8 x 6	8 3/8 x 8 3/8	5
	WB-VB	8 x 8 x 8	8 3/8 x 8 3/8	6
	WB-VB	12 x 12 x 4	12 3/8 x 12 3/8	8
	WB-VB	12 x 12 x 6	12 3/8 x 12 3/8	15
	WB-VB	12 x 12 x 8	12 3/8 x 12 3/8	10

- When a door increases in size, more cams are added for security in the ceiling or wall
- For requests on clear opening after door installed, please email info@wbdoors.com
- All installation holes must be used for proper door functionality and security
- For custom sizes, please reach out to info@wbdoors.com
- Clear opening may be impeded by structural or functional parts on door
- Drawings of any door can be requested through info@wbdoors.com

Project: _____ Date: _____
 Contractor: _____ Architect: _____
 Sizes: _____ Quantity: _____ App Initials: _____

1330 Progress Drive • Front Royal, VA 22630 • Phone: 1-800-255-5515 • www.wbdoors.com



The World's Largest Access Door Store.™

