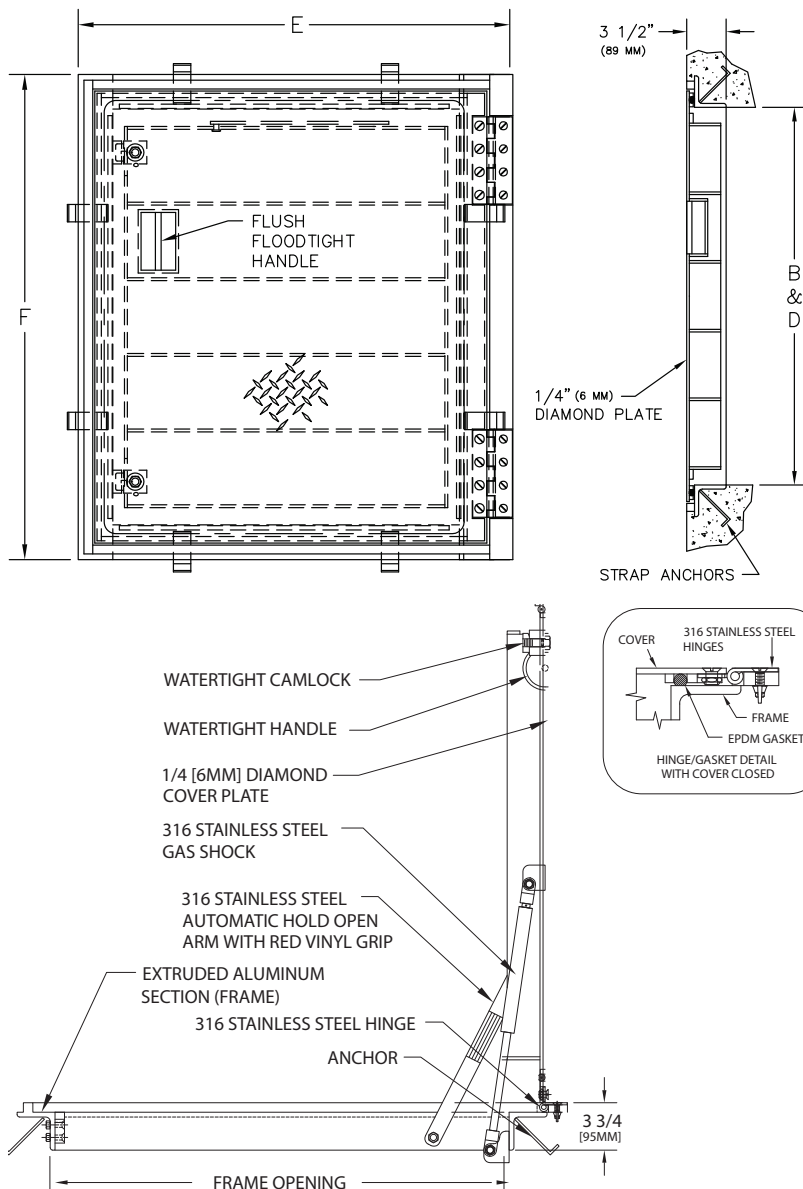




WB W-APS 8100 SERIES 1560 PSF Aluminum Watertight Floor Hatch (Floodtight/Gastight)

STORAGE, HANDLING, INSTALLATION & MAINTENANCE INSTRUCTIONS



STORAGE

Store floor access doors in a clean, dry area, free of dirt and debris. Doors should remain on original shipping pallets until installation.

HANDLING

Use proper care when moving or handling floor access doors. Always keep the unit stable and use palletized forklifts or appropriate equipment.

INSTALLATION

1. Ensure formwork is flush with the inside of the frame.
2. Secure units to formwork using conventional construction methods.
3. If covering the unit, close the cover completely before concrete pour.
4. Finish concrete flush with the top of unit frame.
5. Leave the unit braced and undisturbed for at least 24 hours.
6. Clean any concrete from the frame, cover seat, and drainage channel (if included).

MAINTENANCE

1. Apply graphite lubricant to locks and hinges.
2. Inspect hardware for signs of wear or damage.
3. Remove debris and dirt from cover seat and hinges.
4. Tighten any loose bolts or fasteners.
5. For trough frame models, regularly clear the drainage trough of debris.