

**WALLS OR  
CEILINGS**



**SPECIFICATIONS:**

**Trim, Return, & Door stop:** One-Piece steel construction – doors smaller than 18 x 18 are 22 ga. steel; doors 18 x 18 and larger are 20 ga. steel

**Flange:** 1/2" wide and beveled

**Latches:** Flush screwdriver operated or key operated cylinder lock with automatic dust shutter

**Hinges:** Concealed continuous piano hinge

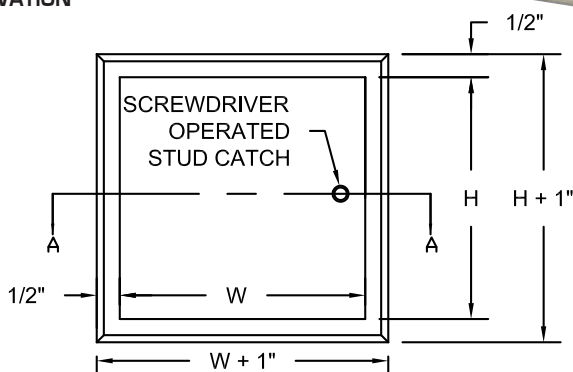
**Return:** Bendable tabs for easy installation into drywall

**Finish:** Prime coated rust inhibitive electrostatic powder, baked white enamel, **paintable surface**

**OPTIONS [at additional cost]**

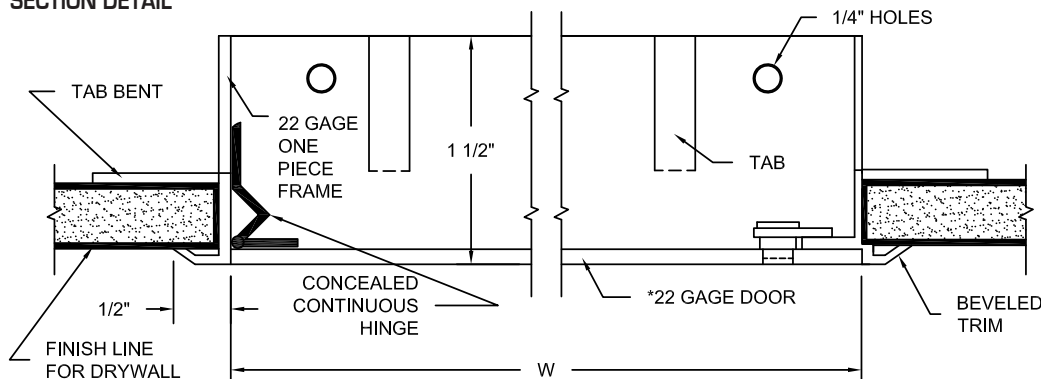
- ☐ Locking T-handle
- ☐ Any lock manufacturer's 1-1/8" mortise cylinder lock
- ☐ Non-locking paddle latch
- ☐ Special sizes available
- ☐ \_\_\_\_\_

**FRONT ELEVATION**



✓	Model No.	Door Diameter	Rough Opening (in.)	No of Stud Latches	Ship Wt. Lbs.
	WB DW-PF 705	8 x 8	7-13/16 x 7-13/16	1	1.5
	WB DW-PF 705	12 x 12	11-13/16 x 11-13/16	1	2.5
	WB DW-PF 705	14 x 14	13-13/16 x 13-13/16	2	3
	WB DW-PF 705	18 x 18	17-13/16 x 17-13/16	2	4.6
	WB DW-PF 705	24 x 24	23-13/16 x 23-13/16	3	7.4

**SECTION DETAIL**



The WB DW-PF Press-Fit door is a unique lightweight door that installs easily by bending the tabs on the return back to grip the drywall. The frame, return and doorstop are one-piece construction with a beveled frame resulting in an attractive finished look.

1. When a door increases in size, more cams are added for security
2. For requests on clear opening after door installed, please email [info@wbdoors.com](mailto:info@wbdoors.com)
3. All installation holes must be used for proper door functionality and security
4. For custom sizes, please reach out to [info@wbdoors.com](mailto:info@wbdoors.com)
5. Clear opening may be impeded by structural or functional parts on door
6. Drawings of any door can be requested through [info@wbdoors.com](mailto:info@wbdoors.com)

Project: \_\_\_\_\_ Date: \_\_\_\_\_

Contractor: \_\_\_\_\_ Architect: \_\_\_\_\_

Sizes: \_\_\_\_\_ Quantity: \_\_\_\_\_ App Initials: \_\_\_\_\_

1330 Progress Drive • Front Royal, VA 22630 • Phone: 1-800-255-5515 • [www.wbdoors.com](http://www.wbdoors.com)